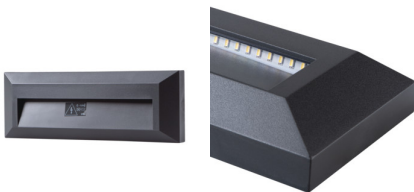


22760 ONSTAR LED-GR

Surface-mounted light fitting

5905339227607



Kanlux ONSTAR is a facade luminaire in graphite colour, characterised by modern design and energy efficiency. Due to the specific shape of the front panel, the luminaire seems to lie flat against the wall. The luminaire perfectly fulfills its function as a decorative lighting, additional stair lighting or illumination of spaces around buildings.

GENERAL DATA:

Colour: grey

Place of assembly: wall mounted

Place of application: Indoors and outdoors

Minimum distance from the illuminated object: 0,2m

Possibility of fixture-loop-through connection: yes

Compatible with a dimmer: no

Length [mm]: 230

Width [mm]: 27

Height [mm]: 78

Integrated LED light source: yes

TECHNICAL DATA:

Rated voltage [V]: 220-240 AC

Rated frequency [Hz]: 50

Maximum power [W]: 1,7

Class of protection against electric shock: II

Diode type: LED SMD

Luminous flux [lm]: 55

Colour temperature: cold white

Correlated colour temperature [K]: 6500

Colour consistency in McAdam ellipses: ≤ 6

Colour rendering index: 80

Service life [h]: 25000

Number of on/off cycles: ≥ 15000

Luminous efficiency of the lamp [lm/W]: 32

Ambient temperature range to which the product can be exposed: $-20 \div 35$

Enclosure material: plastic

Protective glass material: PC

Connection type: Bolt terminal block

Range of sections of wires used [mm²]: $0,5 \div 1,5$

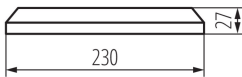
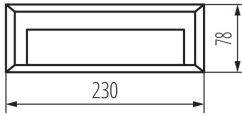
Lamp-heating time [s]: ≤ 1

Lamp-ignition time [s]: $\leq 0,5$

IK class: 09

IP class: 65

Surface-mounted light fitting



LOGISTIC DATA:

Packaging method: 24

Number of units in the secondary packaging: 1

Number of units in the packaging: 24

Number of units per layer on a pallet: 264

Net unit weight [g]: 216

Grammage [g]: 275

Length of a unit pack [cm]: 24

Width of a unit pack [cm]: 3.5

Height of a unit pack [cm]: 9

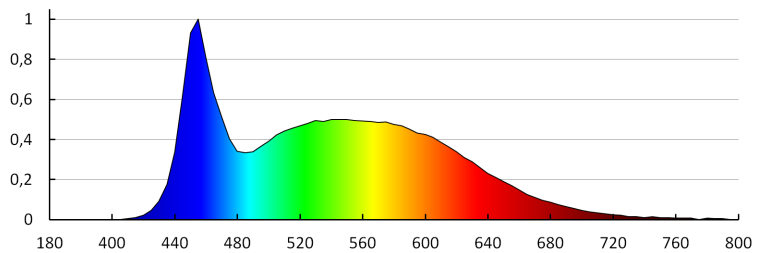
Weight of a cardboard box [kg]: 6.6

Width of a cardboard box [cm]: 16.5

Height of a cardboard box [cm]: 29.5

Length of a cardboard box [cm]: 49.5

Volume of a cardboard box [m³]: 0.024094



KANLUX S.A. (kat 22760) ONSTAR LED-GR / Krzywa rozsyłu światła (biegunowo)

Oprawa: KANLUX S.A. (kat 22760) ONSTAR LED-GR
Lampy: 1 x ONSTAR LED

