

26682 ASTEN LED IP44 15W-NW

LED wall mounted fitting

5905339266828

IP
44



Kanlux ASTEN LED is a linear wall luminaire to be used in places with increased humidity (IP44). You can easily mount it above the bathroom mirror. The lamp has a built-in light source based on SMD LED diodes, which lifetime is at least 25,000 hours.

GENERAL DATA:

Colour: chrome

Place of assembly: wall mounted

Place of application: Indoors

Minimum distance from the illuminated object: 0,1m

Compatible with a dimmer: no

Fixture lighting direction: down

Length [mm]: 900

Width [mm]: 110

Height [mm]: 42

Mercury content: no

Integrated LED light source: yes

TECHNICAL DATA:

Rated voltage [V]: 220-240 AC

Rated frequency [Hz]: 50

Maximum power [W]: 15

Class of protection against electric shock: II

Lampshade material: plastic

Diode type: LED SMD

Luminous flux [lm]: 1340

Useful luminous flux of the light source Φ_{use} [lm]: 1900

Colour temperature: white

Correlated colour temperature [K]: 4000

Colour consistency in McAdam ellipses: ≤ 6

Colour rendering index: 80

Service life [h]: 25000

Number of on/off cycles: ≥ 15000

Lighting angle [°]: X120/Y105

Luminous efficiency of the lamp [lm/W]: 89

Ambient temperature range to which the product can be exposed: 5÷30

Luminous flux retention factor at the end of rated service life [%]: L70B50

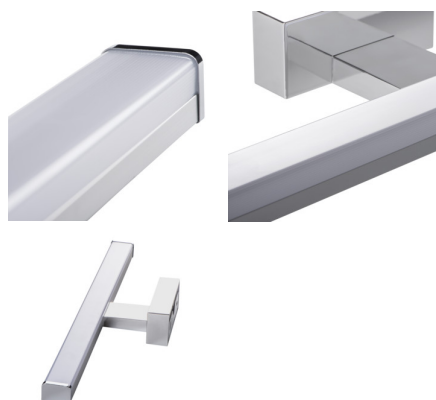
Enclosure material: aluminum alloy

Connection type: Bolt terminal block

Range of sections of wires used [mm²]: 0,75÷1,5

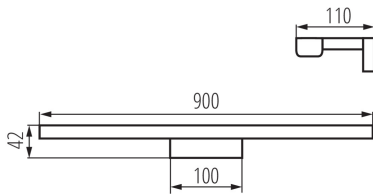
Lamp-heating time [s]: ≤ 1

Lamp-ignition time [s]: $\leq 0,5$



26682 ASTEN LED IP44 15W-NW

LED wall mounted fitting



IP class: 44

LOGISTIC DATA:

Packaging method: 10

Number of units in the secondary packaging: 1

Number of units in the packaging: 10

Net unit weight [g]: 370

Grammage [g]: 675

Length of a unit pack [cm]: 13

Width of a unit pack [cm]: 5

Height of a unit pack [cm]: 91

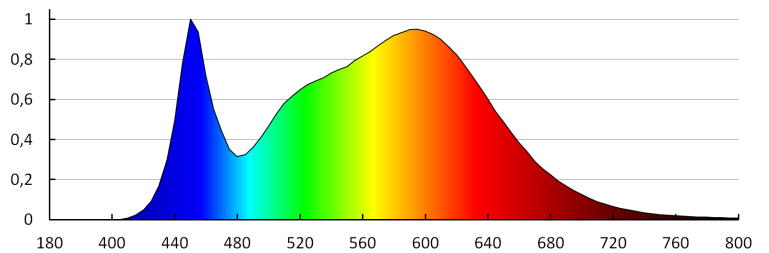
Weight of a cardboard box [kg]: 6.75

Width of a cardboard box [cm]: 28

Height of a cardboard box [cm]: 27.5

Length of a cardboard box [cm]: 93

Volume of a cardboard box [m³]: 0.07161



KANLUX S.A. (kat 26682) ASTEN LED IP44 15W-NW / LDC (Polar)

Luminaire: KANLUX S.A. (kat 26682) ASTEN LED IP44 15W-NW
Lamps: 1 x ASTEN 15W

