

Ceiling-mounted LED light fitting



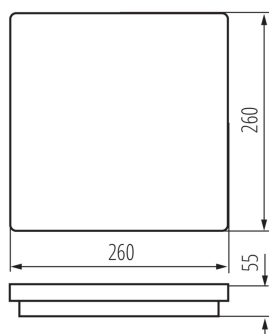
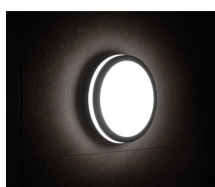
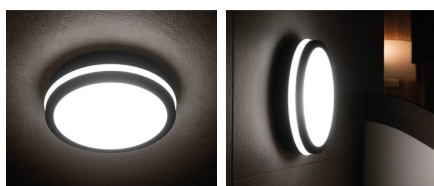
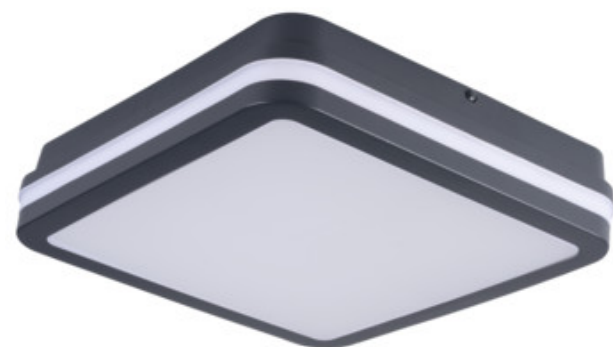
Kanlux BENO luminaries that's unique design and unique light effect. They were created on the basis of individual order of Kanlux, and their designs were registered by us at the patent office. Kanlux BENO LED also provides high weather resistance (IP54), quick and easy installation on the ceiling or wall, and Beno is equipped with the adjustable movement sensor. Kanlux BENO LED is a multifunctional fitting, which due to its design and its technical aspects, we can apply practically anywhere.

GENERAL DATA:

Colour: graphite
Place of assembly: wall mounted, ceiling mounted
Place of application: Indoors and outdoors
Minimum distance from the illuminated object: 0,5m
Compatible with a dimmer: no
Wykrywanie ruchu: yes
Replaceable light source: no
Length [mm]: 260
Width [mm]: 260
Height [mm]: 55
Sensitivity regulation: yes
Integrated LED light source: yes

TECHNICAL DATA:

Rated voltage [V]: 220-240 AC
Rated frequency [Hz]: 50
Maximum power [W]: 24
Class of protection against electric shock: II
Lampshade material: plastic
Diode type: LED SMD
Luminous flux [lm]: 1920
Colour temperature: white
Colour temperature [K]: 4000
Colour uniformity [SDCM]: ≤6
Colour-rendering index Ra: ≥80
Service life [h]: 20000
Number of on/off cycles: ≥20000
Lighting angle [°]: 110
Luminous efficiency of the lamp [lm/W]: 80
Ambient temperature range to which the product can be exposed: -15÷35
Enclosure material: plastic
Sensor type: microwave
Connection type: Self-clamping block
Range of sections of wires used [mm²]: 0,5÷1,5



33347 BENO 24W NW-L-SE GR

Ceiling-mounted LED light fitting



The fixture set includes built-in LED's with the following energy classes: A++,A+,A

Sensor-operation time [second-minute]: 5-5

Lamp-heating time [s]: ≤1

Lamp-ignition time [s]: ≤0,5

Sensor-operation frequency [MHz]: 5800

Illumination-level setpoint by which the sensor detects movement [lx]: 2/10/50/off

IP class: 54

Sensor range[m]: max 4.5