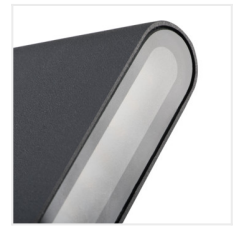


## GARTO LED

Facade luminaire



[V] 220-240 AC	[Hz] 50	$\geq 25000$	$25000$	ellipse $\leq 60^\circ$ MacAdam	Ra 80	SMD
		<b>IP</b> 54	0,5m	$-15 \div 40$		
[mm <sup>2</sup> ] 1.5+2.5		<b>EAC</b>	<b>UK</b> <b>CA</b>			



GARTO LED EL 8W-GR

	[W]	[lm]	T <sub>c</sub> [K]		
GARTO LED EL 8W-GR	<b>29270</b>	8	300	4000	wall mounted graphite
GARTO LED EL 8W-W	<b>29271</b>	8	350	4000	wall mounted white

Kanlux GARTO are facade fittings characterized by simple and attractive design. They can be used as a fitting for interiors (they have an appropriate CRI coefficient), at the same time they can be used on building facades (IP54). In Kanlux GARTO holder light falls on facade from upwards and from downwards being evenly diffused in both directions.

- Enclosure material: aluminum alloy
- Protective glass material: plastic

## GARTO LED

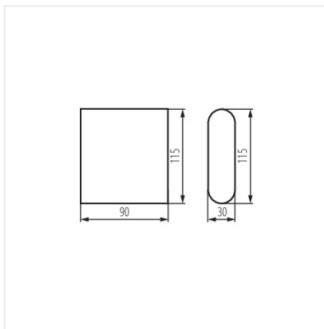
Facade luminaire



GARTO LED EL 8W-GR



GARTO LED EL 8W-W



GARTO LED EL 8W