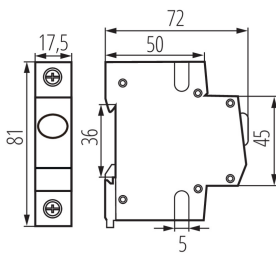


## 23320 KLI-R

TH35 rail-mounted voltage detector

5905339233202



LED light indicator is used to signal the status of electrical circuits.

### GENERAL DATA:

**Colour:** white  
**Place of assembly:** rail TH35  
**Norm:** PN-EN 60947-5-1  
**Number of fields:** 1

### TECHNICAL DATA:

**Rated voltage [V]:** 220-240 AC  
**Rated frequency [Hz]:** 50  
**Number of modules:** 1  
**IP class:** 20

### LOGISTIC DATA:

**Packaging method:** 12  
**Number of units in the secondary packaging:** 12  
**Number of units in the packaging:** 120  
**Net unit weight [g]:** 60  
**Grammage [g]:** 70  
**Length of a unit pack [cm]:** 7.5  
**Width of a unit pack [cm]:** 2  
**Height of a unit pack [cm]:** 8.5  
**Weight of a cardboard box [kg]:** 8.4  
**Width of a cardboard box [cm]:** 25  
**Height of a cardboard box [cm]:** 19.5  
**Length of a cardboard box [cm]:** 45  
**Volume of a cardboard box [m<sup>3</sup>]:** 0.021938