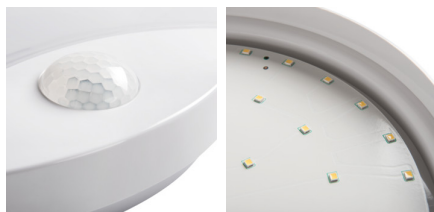


## 26520 SANSO LED 15W-NW-SE

Ceiling-mounted LED light fitting

5905339265203



Kanlux SANSO LED ceiling luminaire with a built-in motion detector PIR allows for its customisation depending on your needs. It is also characterised by increased tightness (IP 44) so its inside is protected against dust and dirt.

### GENERAL DATA:

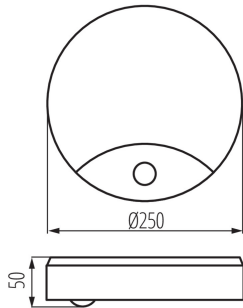
**Colour:** white  
**Place of assembly:** wall mounted, ceiling mounted  
**Place of application:** Indoors and outdoors  
**Minimum distance from the illuminated object:** 0,5m  
**Compatible with a dimmer:** no  
**Wykrywanie ruchu:** yes  
**Height [mm]:** 50  
**Diameter [mm]:** 250  
**Mercury content:** no  
**Integrated LED light source:** yes

### TECHNICAL DATA:

**Rated voltage [V]:** 220-240 AC  
**Rated frequency [Hz]:** 50  
**Maximum power [W]:** 15  
**Class of protection against electric shock:** II  
**Lampshade material:** PC  
**Diode type:** LED SMD  
**Luminous flux of the light fitting [lm]:** 1250  
**Useful luminous flux of the light source  $\Phi_{use}$  [lm]:** 2000  
**Useful luminous flux of the light source  $\Phi_{use}$  [lm]:** in sphere (360°)  
**Colour temperature:** white  
**Correlated colour temperature [K]:** 4000  
**Colour consistency in McAdam ellipses:**  $\leq 6$   
**Colour rendering index:** 80  
**Service life [h]:** 15000  
**Number of on/off cycles:**  $\geq 10000$   
**Lighting angle [°]:** 120  
**Luminous efficiency of the lamp [lm/W]:** 83  
**Ambient temperature range to which the product can be exposed:** -20÷35  
**Enclosure material:** PC  
**Sensor type:** PIR  
**Connection type:** Bolt terminal block  
**Range of sections of wires used [mm<sup>2</sup>]:** 0,5-1,5  
**Sensor-operation time [second-minute]:** 5-5  
**Lamp-heating time [s]:**  $\leq 1$   
**Lamp-ignition time [s]:**  $\leq 0,5$

## 26520 SANSO LED 15W-NW-SE

Ceiling-mounted LED light fitting



**sensor working angle [°]:** H160

**Illumination-level setpoint by which the sensor detects movement [lx]:** 8-2000

**IP class:** 44

**Sensor range[m]:** max 6

### LOGISTIC DATA:

**Packaging method:** 10

**Number of units in the secondary packaging:** 1

**Number of units in the packaging:** 10

**Net unit weight [g]:** 520

**Grammage [g]:** 688

**Length of a unit pack [cm]:** 25.5

**Width of a unit pack [cm]:** 6.5

**Height of a unit pack [cm]:** 25.5

**Weight of a cardboard box [kg]:** 6.88

**Width of a cardboard box [cm]:** 27

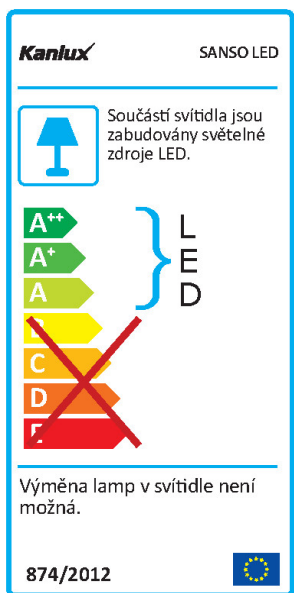
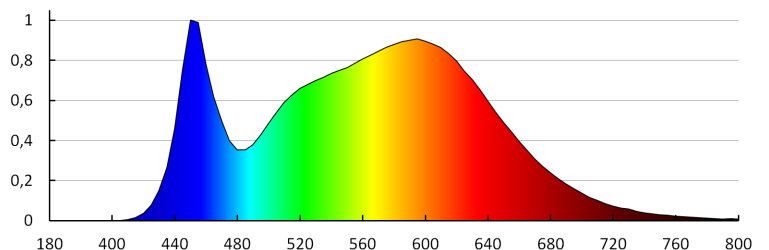
**Height of a cardboard box [cm]:** 28

**Length of a cardboard box [cm]:** 66

**Volume of a cardboard box [m³]:** 0.049896

### ADDITIONAL INFORMATION:

- 5 years Warranty under the terms of the warranty statement, available on our website



## 26520 SANSO LED 15W-NW-SE

Ceiling-mounted LED light fitting

KANLUX S.A. (kat 26520) SANSO LED 15W-NW-SE / Krzywa rozsyłu światła (biegunowo)

Oprawa: KANLUX S.A. (kat 26520) SANSO LED 15W-NW-SE  
Lampy: 1 x SANSO LED 15W-NW-SE

