

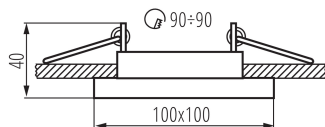
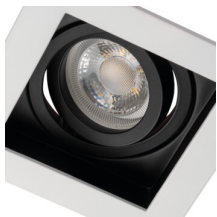
## 26720 ARET 1XMR16-W

Ring for spotlight fittings

5905339267207



ARET 1XMR16-W



A family of the Kanlux ARET holders are decorative rings made of aluminium alloy and steel metal sheet. These eyes are without a frame - you decide on your own whether to add the GZ10 or GX5.3 frame to it. It allows adapting the light source to an installation available in a given room. Kanlux ARET works well as additional lighting both at homes, in bars and in restaurants, in places where you want to emphasize an interesting arrangement of a room or to display its fragment.

### GENERAL DATA:

**Colour:** white / black

**Necessity of using self-shielding lamps :** yes

**Place of assembly:** Recessed mount in the ceiling

**Place of application:** Indoors

**Minimum distance from the illuminated object :** 0,5m

**Decorative ring without a ceramic frame :** yes

**Replaceable light source :** yes

**The product is not suitable to be covered with a heat-insulating material:** yes

**Length [mm]:** 100

**Width [mm]:** 100

**Height [mm]:** 40

**Assembly hole [mm]:** 90x90

### TECHNICAL DATA:

**Rated voltage [V]:** 12 AC; 12 DC; 220-240 AC

**Maximum power [W]:** max 10

**Class of protection against electric shock :** II/III

**Light source:** MR16/PAR16

**Light source included:** no

**Cap (Light source):** Gx5,3/GU10

**Ambient temperature range to which the product can be exposed:** 5÷25

**Enclosure material:** aluminum alloy

**Lighting-fixture angle regulation :** in one axis

**Lighting-fixture angle regulation [°] :** 20

**IP class:** 20

### LOGISTIC DATA:

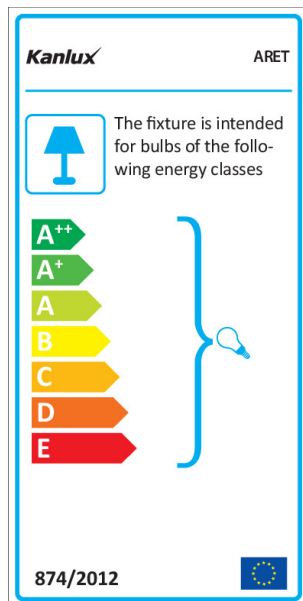
**Unit of measurement:** unit

**Packaging method:** 50

**Number of units in the secondary packaging :** 1

## 26720 ARET 1XMR16-W

### Ring for spotlight fittings



**Number of units in the packaging:** 50

**Net unit weight [g]:** 150

**Grammage [g]:** 200.6

**Gross unit weight [g]:** 182

**Length of a unit pack [cm]:** 11.5

**Width of a unit pack [cm]:** 11.5

**Height of a unit pack [cm]:** 5

**Weight of a cardboard box [kg]:** 10.03

**Width of a cardboard box [cm]:** 26

**Height of a cardboard box [cm]:** 33

**Length of a cardboard box [cm]:** 55

**Volume of a cardboard box [m³]:** 0.04719

#### ADDITIONAL INFORMATION:

- Decorative ring without a ceramic frame

