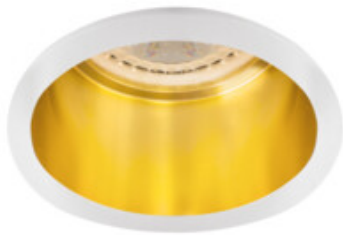


Ring for spotlight fittings

5905339273277



SPAG D W-G



Kanlux SPAG are elegant decorative rings. A combination of gold and classic black or white adds a subtle charm to these holders. Thanks to diverse shapes of the Kanlux SPAG holders, you can create unique and stylish lighting arrangements in your living rooms, elegant restaurants and hotel apartments.

GENERAL DATA:

Colour: white / gold

Necessity of using self-shielding lamps : yes

Place of assembly: Recessed mount in the ceiling

Place of application : Indoors

Minimum distance from the illuminated object : 0,5m

Decorative ring without a ceramic frame : yes

The product is not suitable to be covered with a heat-insulating material: yes

Height [mm]: 50

Diameter [mm]: 68

Assembly hole [mm]: Ø61-62

TECHNICAL DATA:

Rated voltage [V]: 12 AC; 12 DC; 220-240 AC

Maximum power [W]: max 10

Class of protection against electric shock : II/III

Light source : MR16/PAR16

Light source included: no

Cap: Gx5,3/GU10

Ambient temperature range to which the product can be exposed : 5÷25

Enclosure material: aluminum alloy

Lighting-fixture angle regulation : none

IP class: 20

LOGISTIC DATA:

Unit of measurement: unit

Packaging method: 100

Number of units in the secondary packaging : 1

Number of units in the packaging : 100

Net unit weight [g]: 76

Grammage [g]: 104

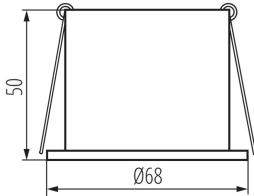
Length of a unit pack [cm]: 7

Width of a unit pack [cm]: 7

Height of a unit pack [cm]: 7

Weight of a cardboard box [kg]: 10.4

Ring for spotlight fittings



Width of a cardboard box [cm]: 37

Height of a cardboard box [cm]: 31

Length of a cardboard box [cm]: 39

Volume of a cardboard box [m³]: 0.044733

ADDITIONAL INFORMATION:

- Decorative ring without a ceramic frame

