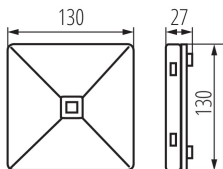


## 27391 ONTEC R M2 302 M ST/W

Emergency lighting LED

5902052556762



Emergency or anti-panic lighting is used in open space rooms to prevent panic. It allows you to reach a place where you can see the marked escape route as well as for the illumination of the escape route itself, depending on the prism used in the fixture.

### GENERAL DATA:

**Colour:** white

**Place of assembly:** wall mounted, ceiling mounted

**Place of application:** Indoors

**Width [mm]:** 130

**Height [mm]:** 27

**Integrated LED light source:** yes

### TECHNICAL DATA:

**Rated voltage [V]:** 220-240 AC

**Rated frequency [Hz]:** 50

**Rated power (LED) [W]:** 2

**Class of protection against electric shock:** II

**Lampshade material:** plastic

**Diode type:** LED SMD

**Luminous flux [lm]:** 288

**Luminous flux [lm] (emergency-lighting module):** 288

**Colour temperature:** cold white

**Correlated colour temperature [K]:** 5000

**Ambient temperature range to which the product can be exposed:** 10÷35

**Battery (type):** LiFePO4/C

**Battery (parameters):** 6.4V

**Operating mode:** emergency and network

**Application:** anti-panic lighting

**Fail-safe working time [h]:** 3

**Standard test:** yes

**Enclosure material:** plastic

**Connection type:** Self-clamping block

**IP class:** 20

### LOGISTIC DATA:

**Packaging method:** 1

**Number of units in the secondary packaging:** 1

**Number of units in the packaging:** 1

**Net unit weight [g]:** 240

**Grammage [g]:** 282

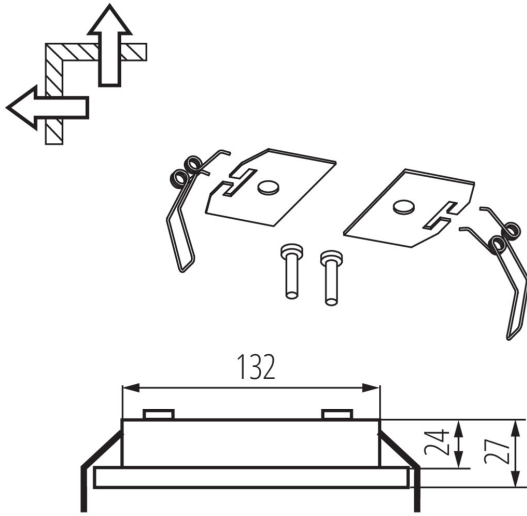
**Length of a unit pack [cm]:** 13.5

**Width of a unit pack [cm]:** 4

**Height of a unit pack [cm]:** 13.5

## 27391 ONTEC R M2 302 M ST/W

Emergency lighting LED



**Weight of a cardboard box [kg]:** 0.282  
**Width of a cardboard box [cm]:** 15  
**Height of a cardboard box [cm]:** 29  
**Length of a cardboard box [cm] :** 21  
**Volume of a cardboard box [m<sup>3</sup>]:** 0.009135

### ADDITIONAL INFORMATION:

- Fail-safe working time [h]: 3 Operating mode: maintained