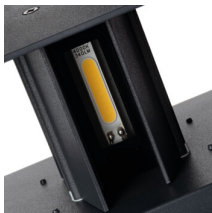


28994 REKA PIR EL 7W-L-GR

Facade luminaire

5905339289940



The Kanlux REKA PIR is a modern architectural LED luminaire designed for mounting on building facades. Equipped with a motion and twilight sensor (operating independently), it allows for adjustable lighting time (10 seconds–10 minutes) and light intensity threshold (0–1000 lx). Thanks to adjustable diffusers, it emits light in two directions – up and down – allowing for effects ranging from narrow lines to wide cascades of light. The luminaire is ideal for illuminating exterior walls, terraces, balconies, and gazebos, especially where continuous illumination is not necessary. Thanks to the sensor, it will only turn on when it's dark and detects nearby motion, and if necessary, it can also operate in continuous mode – simply switch the appropriate on/off combination.

GENERAL DATA:

Colour: graphite

Place of assembly: wall mounted

Place of application: outdoors

Minimum distance from the illuminated object: 0,5m

Compatible with a dimmer: no

Wykrywanie ruchu: no

Fixture lighting direction: up and down

Length [mm]: 100

Width [mm]: 102

Height [mm]: 151

Mercury content in the lamp [mg]: 0

Integrated LED light source: yes

Number of modules (LED light source): 2

TECHNICAL DATA:

Rated voltage [V]: 220-240 AC

Rated frequency [Hz]: 50

Maximum power [W]: 7

Class of protection against electric shock: I

Enclosure material: aluminum alloy

Protective glass material: Tempered glass

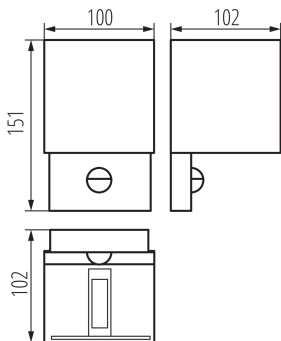
Diode type: LED COB

Luminous flux [lm]: 340

Useful luminous flux of the light source Φ_{use} [lm]: 360

28994 REKA PIR EL 7W-L-GR

Facade luminaire



Useful luminous flux of the light source Φ_{use} [lm] : in sphere (360°)

Colour temperature: white

Correlated colour temperature [K] : 4000

Colour consistency in McAdam ellipses : 6

Colour rendering index : 80

Service life [h] : 30000

Number of on/off cycles : ≥ 20000

Lighting angle [°] : max 90

Luminous efficiency of the lamp [lm/W] : 49

Ambient temperature range to which the product can be exposed : -20÷35

Sensor type: PIR

Connection type: Bolt terminal block

Range of sections of wires used [mm²] : 1

Sensor-operation time [second-minute] : 10-10

Sensor working angle [°] : H120

Illumination-level setpoint by which the sensor detects movement [lx] : 0-1000

IP class: 54

Sensor range[m] : max 6

Kształt : square

LOGISTIC DATA:

Unit of measurement: unit

Packaging method: 20

Number of units in the secondary packaging : 1

Number of units in the packaging : 20

Net unit weight [g] : 686

Grammage [g] : 783.5

Length of a unit pack [cm] : 10.5

Width of a unit pack [cm] : 10.5

Height of a unit pack [cm] : 16

Weight of a cardboard box [kg] : 15.67

Width of a cardboard box [cm] : 23

Height of a cardboard box [cm] : 34

Length of a cardboard box [cm] : 55

Volume of a cardboard box [m³] : 0.04301

ADDITIONAL INFORMATION:

- 5 years Warranty under the terms of the warranty statement, available on our website

- Beam-angle adjustment

