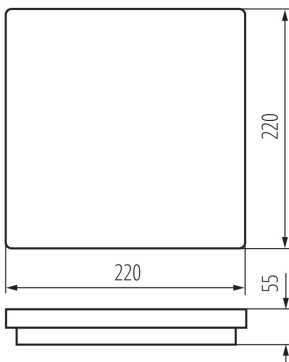
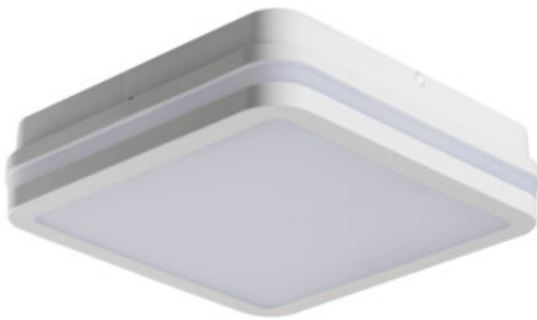


32946 BENO 18W NW-L-SE W

Ceiling-mounted LED light fitting

5905339329462



Kanlux BENO luminaries that's unique design and unique light effect. They were created on the basis of individual order of Kanlux, and their designs were registered by us at the patent office. Kanlux BENO LED also provides high weather resistance (IP54), quick and easy installation on the ceiling or wall, and Beno is equipped with the adjustable movement sensor (in versions -SE). Kanlux BENO LED is a multifunctional fitting, which due to its design and its technical aspects, we can apply practically anywhere.

GENERAL DATA:

Colour: white
Place of assembly: wall mounted, ceiling mounted
Place of application: Indoors and outdoors
Minimum distance from the illuminated object: 0,5m
Compatible with a dimmer: no
Wykrywanie ruchu: yes
Length [mm]: 220
Width [mm]: 220
Height [mm]: 55
Sensitivity regulation: yes
Mercury content: no
Integrated LED light source: yes

TECHNICAL DATA:

Rated voltage [V]: 220-240 AC
Rated frequency [Hz]: 50
Maximum power [W]: 18
Class of protection against electric shock: II
Lampshade material: plastic
Diode type: LED SMD
Luminous flux of the light fitting [lm]: 1550
Useful luminous flux of the light source Φ_{use} [lm]: 2400
Useful luminous flux of the light source Φ_{use} [lm]: in sphere (360°)
Colour temperature: white
Correlated colour temperature [K]: 4000
Colour consistency in McAdam ellipses: ≤ 6
Colour rendering index: 80
Service life [h]: 20000
Luminous-flux-retention factor at the end of rated service life: L70B50
Number of on/off cycles: ≥ 20000
Lighting angle [°]: 110

32946 BENO 18W NW-L-SE W

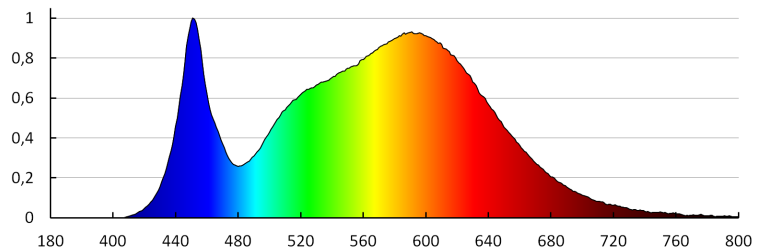
Ceiling-mounted LED light fitting



Luminous efficiency of the lamp [lm/W]: 86
Ambient temperature range to which the product can be exposed: -15÷35
Enclosure material: plastic
Sensor type: microwave
Connection type: Self-clamping block
Range of sections of wires used [mm²]: 0,5÷1,5
Sensor-operation time [second-minute]: 5-5
Lamp-heating time [s]: ≤1
Lamp-ignition time [s]: ≤0,5
Sensor-operation frequency [MHz]: 5800
Illumination-level setpoint by which the sensor detects movement [lx]: 2/10/50/off
IP class: 54
Sensor range[m]: max 4.5

LOGISTIC DATA:

Unit of measurement: unit
Packaging method: 10
Number of units in the secondary packaging: 1
Number of units in the packaging: 10
Net unit weight [g]: 490
Grammage [g]: 647
Length of a unit pack [cm]: 22.5
Width of a unit pack [cm]: 6
Height of a unit pack [cm]: 23
Weight of a cardboard box [kg]: 6.47
Width of a cardboard box [cm]: 32.5
Height of a cardboard box [cm]: 25
Length of a cardboard box [cm]: 47
Volume of a cardboard box [m³]: 0.038188



32946 BENO 18W NW-L-SE W

Ceiling-mounted LED light fitting

