

Track light projector

5905339331366



Kanlux ACORD ATL 1 are integrated lighting fixtures to be mounted on three-phase track. These are lamps that can be adapted to our individual needs. We can choose white or black, two powers (18W and 30W), light color and lighting angle (standard is 60°, but we can replace the reflector and change the angle to 15° or 36°) depending on whether we want to illuminate the surface or a specific detail. Kanlux ACORD ATL 1 stands for 50 000 hours of durability and a 5-year warranty. Branded key components (LED COB and power supply), high level of real color rendering (CRI > 90) and elimination of glare (UGR < 19) are other advantages of these unique luminaires.

GENERAL DATA:

Colour: white

Place of assembly: rail TEAR

Place of application: Indoors

Minimum distance from the illuminated object: 0,5m

Compatible with a dimmer: no

Integrated LED light source: yes

TECHNICAL DATA:

Rated voltage [V]: 220-240 AC

Rated frequency [Hz]: 50

Maximum power [W]: 30

Class of protection against electric shock: II

Diode type: LED COB

Luminous flux [lm]: 3000

Colour temperature: white

Correlated colour temperature [K]: 4000

Colour consistency in McAdam ellipses: ≤6

Colour rendering index: 90

Service life [h]: 50000

Number of on/off cycles: ≥30000

Lighting angle [°]: 60

Luminous efficiency of the lamp [lm/W]: 100

Ambient temperature range to which the product can be exposed: 5÷25

Enclosure material: aluminum alloy

Protective glass material: plastic

Lamp-heating time [s]: ≤1

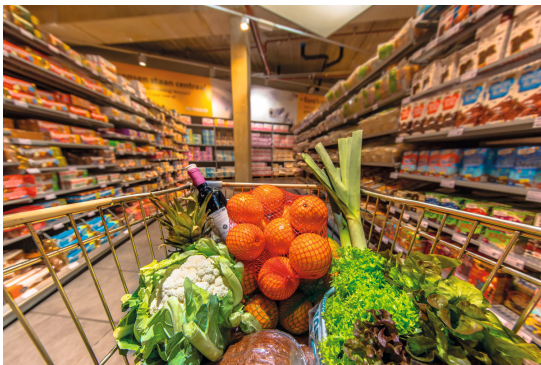
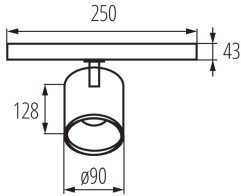
Lamp-ignition time [s]: ≤0,5

The fixture is movable horizontally [°]: 315

The fixture is movable vertically [°]: 90

IP class: 20

Track light projector

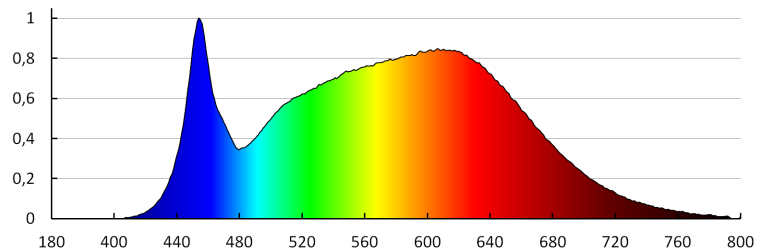


LOGISTIC DATA:

Packaging method: 15
Number of units in the secondary packaging: 1
Number of units in the packaging: 15
Net unit weight [g]: 790
Grammage [g]: 946.67
Length of a unit pack [cm]: 18
Width of a unit pack [cm]: 9.5
Height of a unit pack [cm]: 25.5
Weight of a cardboard box [kg]: 14.20005
Width of a cardboard box [cm]: 28
Height of a cardboard box [cm]: 50
Length of a cardboard box [cm]: 56.5
Volume of a cardboard box [m³]: 0.0791

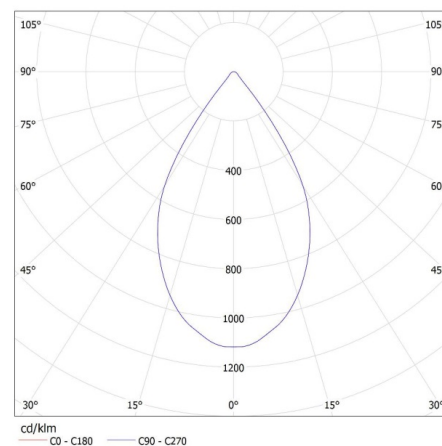
ADDITIONAL INFORMATION:

- 5 years Warranty under the terms of the warranty statement, available on our website
- for installation on the TEAR N busbar



KANLUX S.A. (kat 33136) ATL1 30W-940-S6-W / LDC (Polar)

Luminaire: KANLUX S.A. (kat 33136) ATL1 30W-940-S6-W
Lamps: 1 x ATL1 30W-940-S6

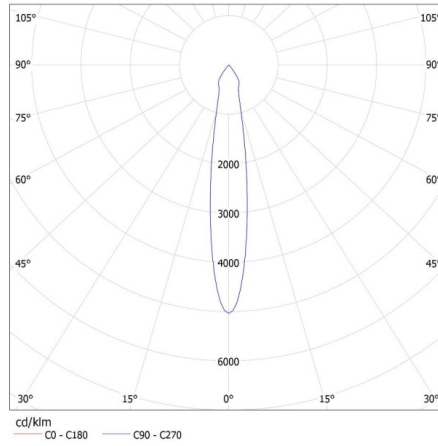


33136 ATL1 30W-940-S6-W

Track light projector

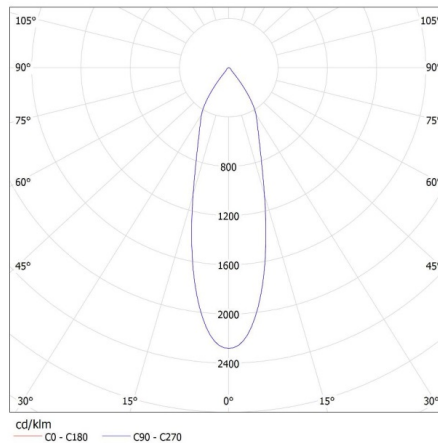
KANLUX S.A. (kat 33136+33142) ATL1 30W-940-S6-W + 33142 / LDC (Polar)

Luminaire: KANLUX S.A. (kat 33136+33142) ATL1 30W-940-S6-W + 33142
Lamps: 1 x ATL1 30W-940-S6



KANLUX S.A. (kat 33136+33143) ATL1 30W-940-S6-W + 33143 / LDC (Polar)

Luminaire: KANLUX S.A. (kat 33136+33143) ATL1 30W-940-S6-W + 33143
Lamps: 1 x ATL1 30W-940-S6



Track light projector

ACCESSORIES:

33140 REF ATL1-18W-S15 Reflector for the ATL 1 luminaire, 18 W, 15 degrees



33141 REF ATL1-18W-S36 Reflector for the ATL 1 luminaire, 18 W, 36 degrees



33142 REF ATL1-30W-S15 Reflector for the ATL 1 luminaire, 30 W, 15 degrees



33143 REF ATL1-30W-S36 Reflector for the ATL 1 luminaire, 30 W, 36 degrees

