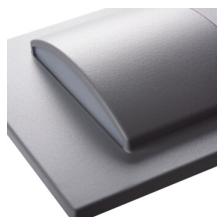
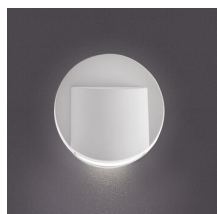


33323 ERINUS LED O W-NW

Staircase LED light fitting

5905339333230



Kanlux ERINUS is a unique series of premium stairwaf fittings made of plastic. These luminaires are characterized by exceptional lightness due to the materials from which they were made, and at the same time they are made with great precision and attention to detail. Kanlux ERINUS are very thin, so they flush with the wall line and make it a discreet decoration. We have three colors to choose (white, black and gray), two colors of light (warm and neutral light) and three different models of luminaires. The Kanlux ERINUS L is a square luminaire glowing in one direction, the LL model shines in both directions, and the Kanlux ERINUS O is a round luminaire glowing in one direction.

GENERAL DATA:

To be built into the wall : yes

Colour: white

Place of assembly: Recessed mount in the wall

Place of application: Indoors

Minimum distance from the illuminated object : 0,1m

Compatible with a dimmer : no

Width [mm]: 16

Diameter [mm]: 75

Required diameter of the assembly box [Ømm]: 60

Assembly-hole dimensions [mm]: 60

Integrated LED light source : yes

TECHNICAL DATA:

Rated voltage [V]: 12 DC

Maximum power [W]: 0.8

Class of protection against electric shock : III

Lampshade material: plastic

Diode type: LED SMD

Luminous flux [lm]: 15

Colour temperature: white

Correlated colour temperature [K]: 4000

Colour consistency in McAdam ellipses : ≤6

Colour rendering index: 80

Service life [h]: 30000

Number of on/off cycles : ≥15000

Luminous efficiency of the lamp [lm/W]: 19

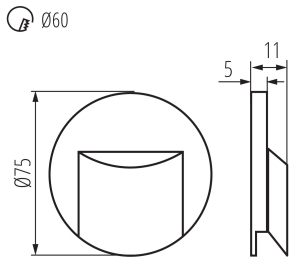
Ambient temperature range to which the product can be exposed: 5÷25

Enclosure material: plastic

Connection type: Free cable ends

33323 ERINUS LED O W-NW

Staircase LED light fitting



Lamp-heating time [s]: ≤ 1
 Lamp-ignition time [s]: $\leq 0,5$
 IP class: 20

LOGISTIC DATA:

Unit of measurement: unit
 Packaging method: 100
 Number of units in the secondary packaging: 1
 Number of units in the packaging: 100
 Net unit weight [g]: 20
 Grammage [g]: 42.9
 Gross unit weight [g]: 38
 Length of a unit pack [cm]: 11
 Width of a unit pack [cm]: 2.5
 Height of a unit pack [cm]: 16.5
 Weight of a cardboard box [kg]: 4.29
 Width of a cardboard box [cm]: 23
 Height of a cardboard box [cm]: 35
 Length of a cardboard box [cm]: 69.5
 Volume of a cardboard box [m³]: 0.055948

