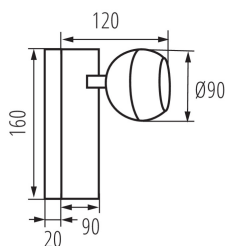


33673 GALOBA W 1xGU10 B

Wall-mounted light fitting

5905339336736



Kanlux GALOBA is a complete series of luminaires, including pendant lamps (GALOBA C), wall lamps (GALOBA W) and wall and ceiling fixtures. Kanlux GALOBA C pendant lamps can be successfully used for the lighting of islands or tables, while wall and ceiling lamps (from 1 to 4 points of light) can be used in a living room, hall or bedroom. The arrangement can be completed with wall lamps, which have a switch in the base. All luminaires from the Kanlux GALOBA series have a detachable lampshade thanks to which the light sources can be quickly and comfortably replaced.

GENERAL DATA:

Colour: black

Place of assembly: wall mounted

Place of application: Indoors

Minimum distance from the illuminated object: 0,5m

On switch: yes

Length [mm]: 140

Width [mm]: 90

Height [mm]: 160

TECHNICAL DATA:

Rated voltage [V]: 220-240 AC

Rated frequency [Hz]: 50

Maximum power [W]: max 35

Class of protection against electric shock: I

Light source: PAR16

Light source included: no

Cap: GU10

Ambient temperature range to which the product can be exposed: 5÷25

Enclosure material: aluminum alloy

Connection type: Bolt terminal block

Range of sections of wires used [mm²]: 0,75÷1,5

The fixture is movable horizontally [°]: 335

The fixture is movable vertically [°]: 315

IP class: 20

LOGISTIC DATA:

Packaging method: 20

Number of units in the secondary packaging: 1

Number of units in the packaging: 20

Net unit weight [g]: 384

Grammage [g]: 500

33673 GALOBA W 1xGU10 B

Wall-mounted light fitting



Length of a unit pack [cm]: 20.5
Width of a unit pack [cm]: 9.5
Height of a unit pack [cm]: 14.5
Weight of a cardboard box [kg]: 10
Width of a cardboard box [cm]: 43.5
Height of a cardboard box [cm]: 31.5
Length of a cardboard box [cm] : 50
Volume of a cardboard box [m³]: 0.068513

ADDITIONAL INFORMATION:

- Maximum light-source height 55 mm