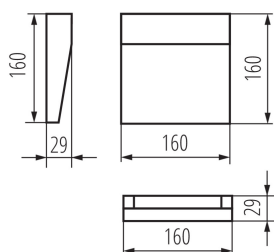
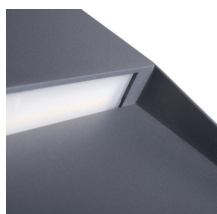


33752 DULI LED 6,5W-NW-L-GR

Surface-mounted light fitting

5905339337528



Kanlux DULI LED is a series of surface-mounted, façade luminaires. Modern and geometric design in a simple form makes this series very universal. A matte graphite finish and the most popular colour temperature for architectural luminaires (4000K) are other advantages. Kanlux DULI LED is decorative accent lighting that illuminates spaces around the building. Kanlux DULI LED surface-mounted luminaires are powered by 230V without using an additional power supply unit.

GENERAL DATA:

Colour: anthracite
Place of assembly: wall mounted
Place of application: Indoors and outdoors
Minimum distance from the illuminated object: 0,2m
Compatible with a dimmer: no
RAL: 7016
Width [mm]: 160
Height [mm]: 160
Depth [mm]: 29
Integrated LED light source: yes

TECHNICAL DATA:

Rated voltage [V]: 220-240 AC
Rated frequency [Hz]: 50
Maximum power [W]: 6,5
Class of protection against electric shock: I
Diode type: LED SMD
Luminous flux [lm]: 270
Useful luminous flux of the light source Φ_{use} [lm]: 740
Useful luminous flux of the light source Φ_{use} [lm]: in sphere (360°)
Colour temperature: white
Correlated colour temperature [K]: 4000
Colour consistency in McAdam ellipses: ≤ 6
Colour rendering index: 80
Service life [h]: 30000
Number of on/off cycles: ≥ 25000
Luminous efficiency of the lamp [lm/W]: 42
Ambient temperature range to which the product can be exposed: -15÷35
Enclosure material: aluminum alloy
Protective glass material: PC
Connection type: Terminal block
Range of sections of wires used [mm²]: 0,75-1,5

33752 DULI LED 6,5W-NW-L-GR

Surface-mounted light fitting



Lamp-heating time [s]: ≤ 1
Lamp-ignition time [s]: $\leq 0,5$
IP class: 54

LOGISTIC DATA:

Packaging method: 20
Number of units in the secondary packaging: 1
Number of units in the packaging: 20
Net unit weight [g]: 377
Grammage [g]: 458.5
Length of a unit pack [cm]: 17
Width of a unit pack [cm]: 4
Height of a unit pack [cm]: 17
Weight of a cardboard box [kg]: 9.17
Width of a cardboard box [cm]: 21.5
Height of a cardboard box [cm]: 36
Length of a cardboard box [cm]: 36
Volume of a cardboard box [m³]: 0.027864

KANLUX S.A. (kat 33752) DULI LED 6,5W-NW-L-GR / LDC (Polar)

Luminaire: KANLUX S.A. (kat 33752) DULI LED 6,5W-NW-L-GR
Lamps: 1 x DULI LED 6,5W

