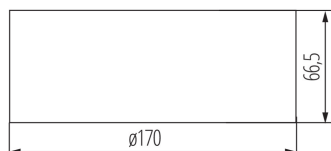


Emergency lighting LED

5902052531172



Emergency or anti-panic lighting is used in open space rooms to prevent panic. It allows you to reach a place where you can see the marked escape route as well as for the illumination of the escape route itself, depending on the prism used in the fixture.

GENERAL DATA:

Colour: white
Place of assembly: wall mounted, ceiling mounted
Place of application: Indoors
Replaceable light source: no
Height [mm]: 66.5
Diameter [mm]: 170
Integrated LED light source: yes

TECHNICAL DATA:

Rated voltage [V]: 220-240 AC
Rated frequency [Hz]: 50
Maximum power [W]: 4.5
Class of protection against electric shock: II
Diode type: LED SMD
Luminous flux [lm]: 524
Luminous flux [lm] (emergency-lighting module): 524
Colour temperature: cold white
Correlated colour temperature [K]: 5000
Ambient temperature range to which the product can be exposed: 10÷40
Battery (type): LiFePO4/C
Battery (parameters): 6.4V
Operating mode: emergency and network
Application: anti-panic lighting
Fail-safe working time [h]: 3
Automatic test: yes
Enclosure material: plastic
Connection type: Self-clamping block
IP class: 65

LOGISTIC DATA:

Packaging method: 1
Number of units in the secondary packaging: 1
Number of units in the packaging: 1

Emergency lighting LED

ACCESSORIES:

33830 UCHW PODT OS S2 S3 IT