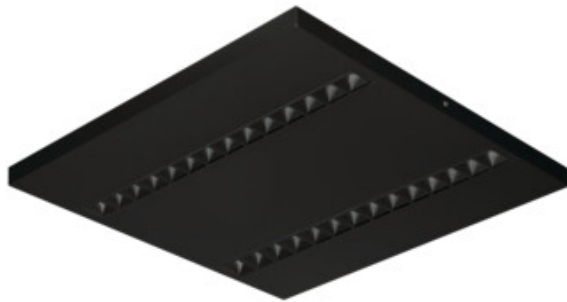


35954 OS-S5D-NW-RST-B-N1

Surface-mounted LED office fixture

5905339359544



A series of fixtures for professionals from the Kanlux Factory, which combines functionality and aesthetics. Thanks to very good lighting parameters, OFIS RST LED luminaires allow you to create energy-saving and modern lighting systems. The full picture of the product is complemented by the low UGR glare factor, which improves work comfort and visual effects.

GENERAL DATA:

Colour: black

Place of assembly: ceiling mounted

Place of application: Indoors

Minimum distance from the illuminated object : 0,5m

Compatible with a dimmer : no

The product is not suitable to be covered with a heat-insulating material: yes

Length [mm]: 600

Width [mm]: 600

Height [mm]: 35

Integrated LED light source : yes

Number of modules (LED light source): 4

TECHNICAL DATA:

Rated voltage [V]: 220-240 AC

Rated frequency [Hz]: 50

Maximum power [W]: 22

Class of protection against electric shock : I

Lampshade material: plastic

Enclosure material: Metal

Diode type: LED SMD

Luminous flux of the light fitting [lm]: 2800

Useful luminous flux of the light source Φ_{use} [lm]: 896

Useful luminous flux of the light source Φ_{use} [lm]: in sphere (360°)

Colour temperature: white

Correlated colour temperature [K]: 4000

Colour consistency in McAdam ellipses : ≤ 3

Colour rendering index: 80

Service life [h]: 50000

35954 OS-S5D-NW-RST-B-N1

Surface-mounted LED office fixture



Luminous-flux-retention factor at the end of rated service life :
L90B10

Number of on/off cycles : ≥ 30000

Lighting angle [°] : 50

Luminous efficiency of the lamp [lm/W] : 127

Ambient temperature range to which the product can be exposed : 5÷25

Shade type : louvre

Connection type : Self-clamping block

Range of sections of wires used [mm²] : 1,5÷2,5

Rodzaj soczewki [°] : 50

IP class : 20

UGR : ≤ 14

LOGISTIC DATA:

Unit of measurement : unit

Packaging method : 1

Number of units in the secondary packaging : 1

Number of units in the packaging : 1

Net unit weight [g] : 4200

Grammage [g] : 4550

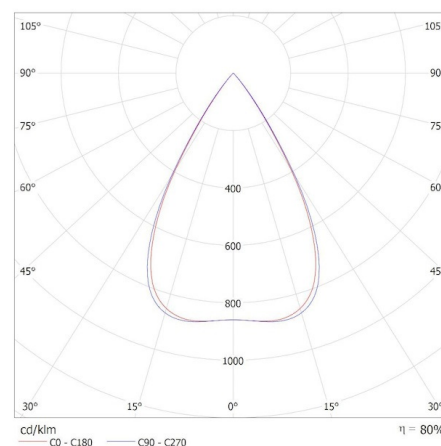
Weight of a cardboard box [kg] : 4.55

ADDITIONAL INFORMATION:

- 5 years Warranty under the terms of the warranty statement, available on our website

KANLUX S.A. (kat 35954) OS-S5D-NW-RST-B-N1 / Krzywa rozsyłu światła (biegunowo)

Oprawa: KANLUX S.A. (kat 35954) OS-S5D-NW-RST-B-N1
Lampy: 4 x OS-S5D-NW-RST



35954 OS-S5D-NW-RST-B-N1

Surface-mounted LED office fixture