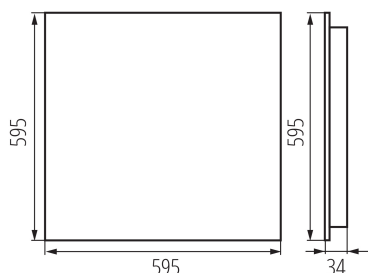
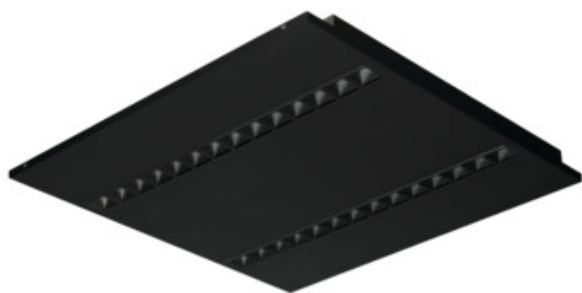


## 35976 OS-L8D-WW-RST-B-P1

Recessed - Mounted LED Office Fixture

5905339359766



### GENERAL DATA:

**Colour:** black

**Place of assembly:** Recessed mount in the ceiling

**Place of application:** Indoors

**Minimum distance from the illuminated object :** 0,5m

**Compatible with a dimmer :** no

**The product is not suitable to be covered with a heat-insulating material:** yes

**Length [mm]:** 595

**Width [mm]:** 595

**Height [mm]:** 34

**Integrated LED light source :** yes

### TECHNICAL DATA:

**Rated voltage [V]:** 220-240 AC

**Rated frequency [Hz]:** 50

**Maximum power [W]:** 31W

**Class of protection against electric shock :** I

**Lampshade material:** plastic

**Diode type:** LED SMD

**Luminous flux of the light fitting [lm]:** 3800

**Colour temperature:** Warm white

**Correlated colour temperature [K]:** 3000

**Colour consistency in McAdam ellipses :**  $\leq 3$

**Colour rendering index:** 80

**Service life [h]:** 50000

**Luminous-flux-retention factor at the end of rated service life :**  
L90B10

**Number of on/off cycles:**  $\geq 30000$

**Lighting angle [°]:** 80

**Ambient temperature range to which the product can be exposed:**  $5 \div 25$

**Shade type:** louver

**Enclosure material:** Metal

**Connection type:** Self-clamping block

**Range of sections of wires used [mm²]:**  $1,5 \div 2,5$

**Lamp-heating time [s]:**  $\leq 1$

**Lamp-ignition time [s]:**  $\leq 0,5$

**Rodzaj soczewki [°]:** 80

**IP class:** 20

**UGR:**  $\leq 15$

## 35976 OS-L8D-WW-RST-B-P1

Recessed - Mounted LED Office Fixture



### LOGISTIC DATA:

**Unit of measurement:** unit

**Packaging method:** 1

**Number of units in the secondary packaging :** 1

**Number of units in the packaging :** 1

### ADDITIONAL INFORMATION:

- 5 years Warranty under the terms of the warranty statement, available on our website

KANLUX S.A. (kat 35976) OS-L8D-WW-RST-B-P1 / Krzywa rozsyłu światła (biegunowo)

Oprawa: KANLUX S.A. (kat 35976) OS-L8D-WW-RST-B-P1  
Lampy: 4 x OS-L8D-WW-RST

