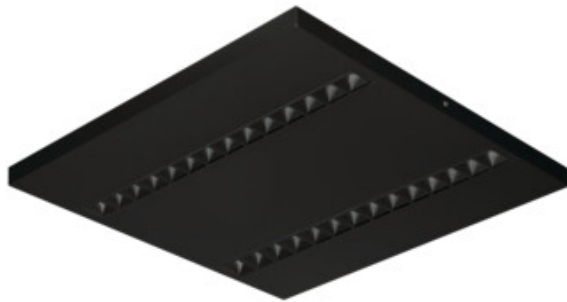


## 35986 OS-S8D-NW-RST-B-N1

Surface-mounted LED office fixture

5905339359865



A series of fixtures for professionals from the Kanlux Factory, which combines functionality and aesthetics. Thanks to very good lighting parameters, OFIS RST LED luminaires allow you to create energy-saving and modern lighting systems. The full picture of the product is complemented by the low UGR glare factor, which improves work comfort and visual effects.

### GENERAL DATA:

**Colour:** black

**Place of assembly:** ceiling mounted

**Place of application:** Indoors

**Minimum distance from the illuminated object :** 0,5m

**Compatible with a dimmer :** no

**The product is not suitable to be covered with a heat-insulating material:** yes

**Length [mm]:** 600

**Width [mm]:** 600

**Height [mm]:** 35

**Integrated LED light source :** yes

**Number of modules (LED light source):** 4

### TECHNICAL DATA:

**Rated voltage [V]:** 220-240 AC

**Rated frequency [Hz]:** 50

**Maximum power [W]:** 22

**Class of protection against electric shock :** I

**Lampshade material:** plastic

**Enclosure material:** Metal

**Diode type:** LED SMD

**Luminous flux of the light fitting [lm]:** 2800

**Useful luminous flux of the light source  $\Phi_{use}$  [lm]:** 896

**Useful luminous flux of the light source  $\Phi_{use}$  [lm]:** in sphere (360°)

**Colour temperature:** white

**Correlated colour temperature [K]:** 4000

**Colour consistency in McAdam ellipses :**  $\leq 3$

**Colour rendering index:** 80

**Service life [h]:** 50000

## 35986 OS-S8D-NW-RST-B-N1

Surface-mounted LED office fixture



**Luminous-flux-retention factor at the end of rated service life :**

L90B10

**Number of on/off cycles :**  $\geq 30000$

**Lighting angle [°] :** 80

**Luminous efficiency of the lamp [lm/W] :** 127

**Ambient temperature range to which the product can be exposed :** 5÷25

**Shade type :** louvre

**Connection type :** Self-clamping block

**Range of sections of wires used [mm²] :** 1,5÷2,5

**Rodzaj soczewki [°] :** 80

**IP class :** 20

**UGR :**  $\leq 14$

### LOGISTIC DATA:

**Unit of measurement :** unit

**Packaging method :** 1

**Number of units in the secondary packaging :** 1

**Number of units in the packaging :** 1

**Net unit weight [g] :** 4200

**Grammage [g] :** 4550

**Weight of a cardboard box [kg] :** 4.55

### ADDITIONAL INFORMATION:

- 5 years Warranty under the terms of the warranty statement, available on our website

KANLUX S.A. (kat 35986) OS-S8D-NW-RST-B-N1 / Krzywa rozsyłu światła (biegunowo)

Oprawa: KANLUX S.A. (kat 35986) OS-S8D-NW-RST-B-N1  
Lampy: 4 x OS-S8D-NW-RST

