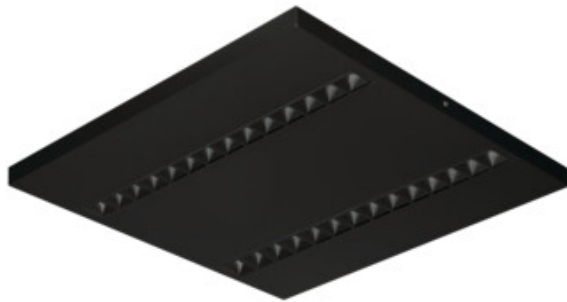


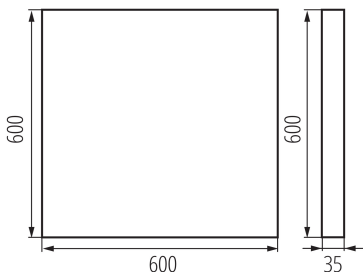
## 35998 OS-H8D-NW-RST-B-N1

Surface-mounted LED office fixture

5905339359988



OS RST B N1



A series of fixtures for professionals from the Kanlux Factory, which combines functionality and aesthetics. Thanks to very good lighting parameters, OFIS RST LED luminaires allow you to create energy-saving and modern lighting systems. The full picture of the product is complemented by the low UGR glare factor, which improves work comfort and visual effects.

### GENERAL DATA:

**Colour:** black

**Place of assembly:** ceiling mounted

**Place of application:** Indoors

**Minimum distance from the illuminated object :** 0,5m

**Compatible with a dimmer :** no

**The product is not suitable to be covered with a heat-insulating material:** yes

**Length [mm]:** 600

**Width [mm]:** 600

**Height [mm]:** 35

**Integrated LED light source :** yes

**Number of modules (LED light source):** 4

### TECHNICAL DATA:

**Rated voltage [V]:** 220-240 AC

**Rated frequency [Hz]:** 50

**Maximum power [W]:** 49

**Class of protection against electric shock :** I

**Lampshade material:** plastic

**Enclosure material:** Metal

**Diode type:** LED SMD

**Luminous flux of the light fitting [lm]:** 5600

**Useful luminous flux of the light source  $\Phi_{use}$  [lm]:** 1743

**Useful luminous flux of the light source  $\Phi_{use}$  [lm]:** in sphere (360°)

**Colour temperature:** white

**Correlated colour temperature [K]:** 4000

**Colour consistency in McAdam ellipses :**  $\leq 3$

**Colour rendering index:** 80

**Service life [h]:** 50000

## 35998 OS-H8D-NW-RST-B-N1

Surface-mounted LED office fixture



**Luminous-flux-retention factor at the end of rated service life :**

L90B10

**Number of on/off cycles:**  $\geq 30000$

**Lighting angle [°]:** 80

**Luminous efficiency of the lamp [lm/W]:** 114

**Ambient temperature range to which the product can be exposed:** 5÷25

**Shade type:** louvre

**Connection type:** Self-clamping block

**Range of sections of wires used [mm²]:** 1,5÷2,5

**Rodzaj soczewki [°]:** 80

**IP class:** 20

**UGR:**  $\leq 16$

### LOGISTIC DATA:

**Unit of measurement:** unit

**Packaging method:** 1

**Number of units in the secondary packaging :** 1

**Number of units in the packaging :** 1

**Net unit weight [g]:** 4200

**Grammage [g]:** 4550

**Length of a unit pack [cm]:** 63

**Width of a unit pack [cm]:** 61.5

**Height of a unit pack [cm]:** 5.5

**Weight of a cardboard box [kg]:** 4.55

**Width of a cardboard box [cm]:** 61.5

**Height of a cardboard box [cm]:** 5.5

**Length of a cardboard box [cm] :** 63

**Volume of a cardboard box [m³]:** 0.02131

### ADDITIONAL INFORMATION:

- 5 years Warranty under the terms of the warranty statement, available on our website

## 35998 OS-H8D-NW-RST-B-N1

Surface-mounted LED office fixture

