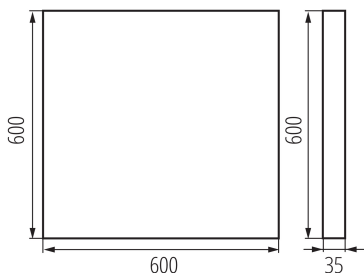
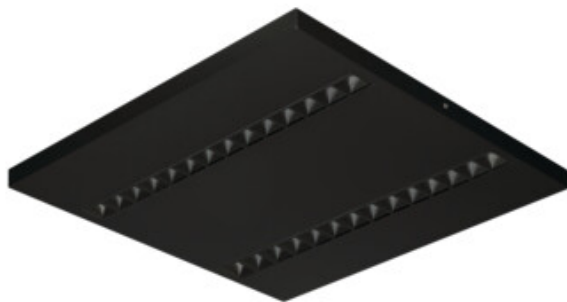


36138 OS-M5D-WN-RST-B-N1

Surface-mounted LED office fixture

5905339361387



A series of fixtures for professionals from the Kanlux Factory, which combines functionality and aesthetics. Thanks to very good lighting parameters, OFIS RST LED luminaires allow you to create energy-saving and modern lighting systems. The full picture of the product is complemented by the low UGR glare factor, which improves work comfort and visual effects.

GENERAL DATA:

Colour: black

Place of assembly: ceiling mounted

Place of application: Indoors

Minimum distance from the illuminated object: 0,5m

Compatible with a dimmer: no

The product is not suitable to be covered with a heat-insulating material: yes

Length [mm]: 600

Width [mm]: 600

Height [mm]: 35

Integrated LED light source: yes

Number of modules (LED light source): 4

TECHNICAL DATA:

Rated voltage [V]: 220-240 AC

Rated frequency [Hz]: 50

Maximum power [W]: 39

Class of protection against electric shock: I

Lampshade material: plastic

Enclosure material: Metal

Diode type: LED SMD

Luminous flux of the light fitting [lm]: 4800

Useful luminous flux of the light source Φ_{use} [lm]: 1476.5

Useful luminous flux of the light source Φ_{use} [lm]: in sphere (360°)

Colour temperature: neutral warm white

Correlated colour temperature [K]: 3500

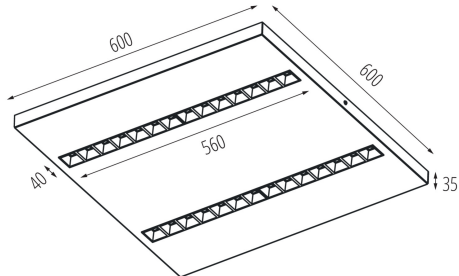
Colour consistency in McAdam ellipses: ≤ 3

Colour rendering index: 80

Service life [h]: 50000

36138 OS-M5D-WN-RST-B-N1

Surface-mounted LED office fixture



Luminous-flux-retention factor at the end of rated service life :
L90B10

Number of on/off cycles: ≥ 30000

Lighting angle [°]: 50

Luminous efficiency of the lamp [lm/W]: 123

Ambient temperature range to which the product can be exposed: 5÷25

Shade type: louvre

Connection type: Self-clamping block

Range of sections of wires used [mm²]: 1,5÷2,5

Rodzaj soczewki [°]: 50

IP class: 20

UGR: ≤ 16

LOGISTIC DATA:

Unit of measurement: unit

Packaging method: 1

Number of units in the secondary packaging : 1

Number of units in the packaging : 1

Net unit weight [g]: 4200

Grammage [g]: 4550

Weight of a cardboard box [kg]: 4.55

ADDITIONAL INFORMATION:

- 5 years Warranty under the terms of the warranty statement, available on our website

KANLUX S.A. (kat 36138) OS-M5D-WN-RST-B-N1 / Krzywa rozsyłu światła (biegunowo)

Oprawa: KANLUX S.A. (kat 36138) OS-M5D-WN-RST-B-N1
Lampy: 4 x OS-M5D-WN-RST

