

36517 TAVO LED DL 12W-NW

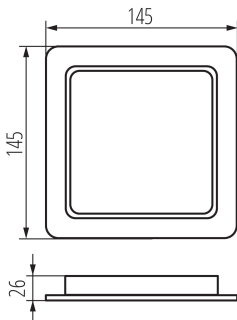
Downlight fitting

5905339365170

IP
44/20



125x125



Kanlux TAVO LED is a family of flush-mounted downlights. They are available in two shapes (round and square) and 5 wattages - from 5W to 24W. Kanlux TAVO LED downlights are characterised by a minimalist, Scandinavian design. Additional advantages are their IP44/20 tightness, as well as the possibility of surface mounting the 12W and 18W models in the Kanlux TAVO FRAME.

GENERAL DATA:

Colour: white

Place of assembly: Recessed mount in the ceiling

Place of application: Indoors

Minimum distance from the illuminated object: 0,5m

Compatible with a dimmer: no

The product is not suitable to be covered with a heat-insulating material: yes

Length [mm]: 145

Width [mm]: 145

Height [mm]: 26

Assembly hole [mm]: 120X120

Mercury content in the lamp [mg]: 0

Integrated LED light source: yes

TECHNICAL DATA:

Rated voltage [V]: 220-240 AC

Rated frequency [Hz]: 50

Maximum power [W]: 12

Class of protection against electric shock: II

Lampshade material: plastic

Enclosure material: plastic

Diode type: LED SMD

Luminous flux [lm]: 1250

Useful luminous flux of the light source Φ_{use} [lm]: 1800

Useful luminous flux of the light source Φ_{use} [lm]: in sphere (360°)

Colour temperature: white

Correlated colour temperature [K]: 4000

Colour consistency in McAdam ellipses: 6

Colour rendering index: 80

Service life [h]: 25000

36517 TAVO LED DL 12W-NW

Downlight fitting



Number of on/off cycles: ≥ 15000

Lighting angle [°]: 120

Luminous efficiency of the lamp [lm/W]: 104

Ambient temperature range to which the product can be exposed: 5÷25

Connection type: Free cable ends

Wire length [m]: 0.1

IP class: 44/20

Kształt: square

LOGISTIC DATA:

Unit of measurement: unit

Packaging method: 60

Number of units in the secondary packaging: 1

Number of units in the packaging: 60

Net unit weight [g]: 130

Grammage [g]: 201.17

Gross unit weight [g]: 188

Length of a unit pack [cm]: 3.7

Width of a unit pack [cm]: 17

Height of a unit pack [cm]: 15

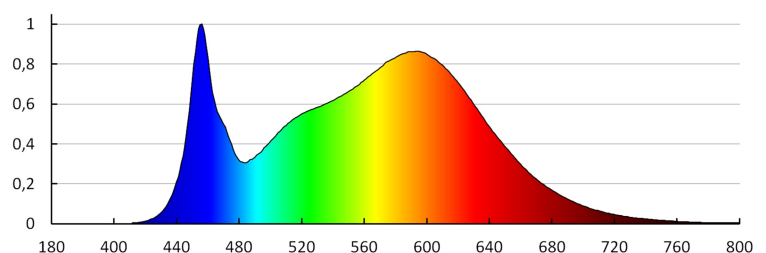
Weight of a cardboard box [kg]: 12.0702

Width of a cardboard box [cm]: 39.5

Height of a cardboard box [cm]: 33

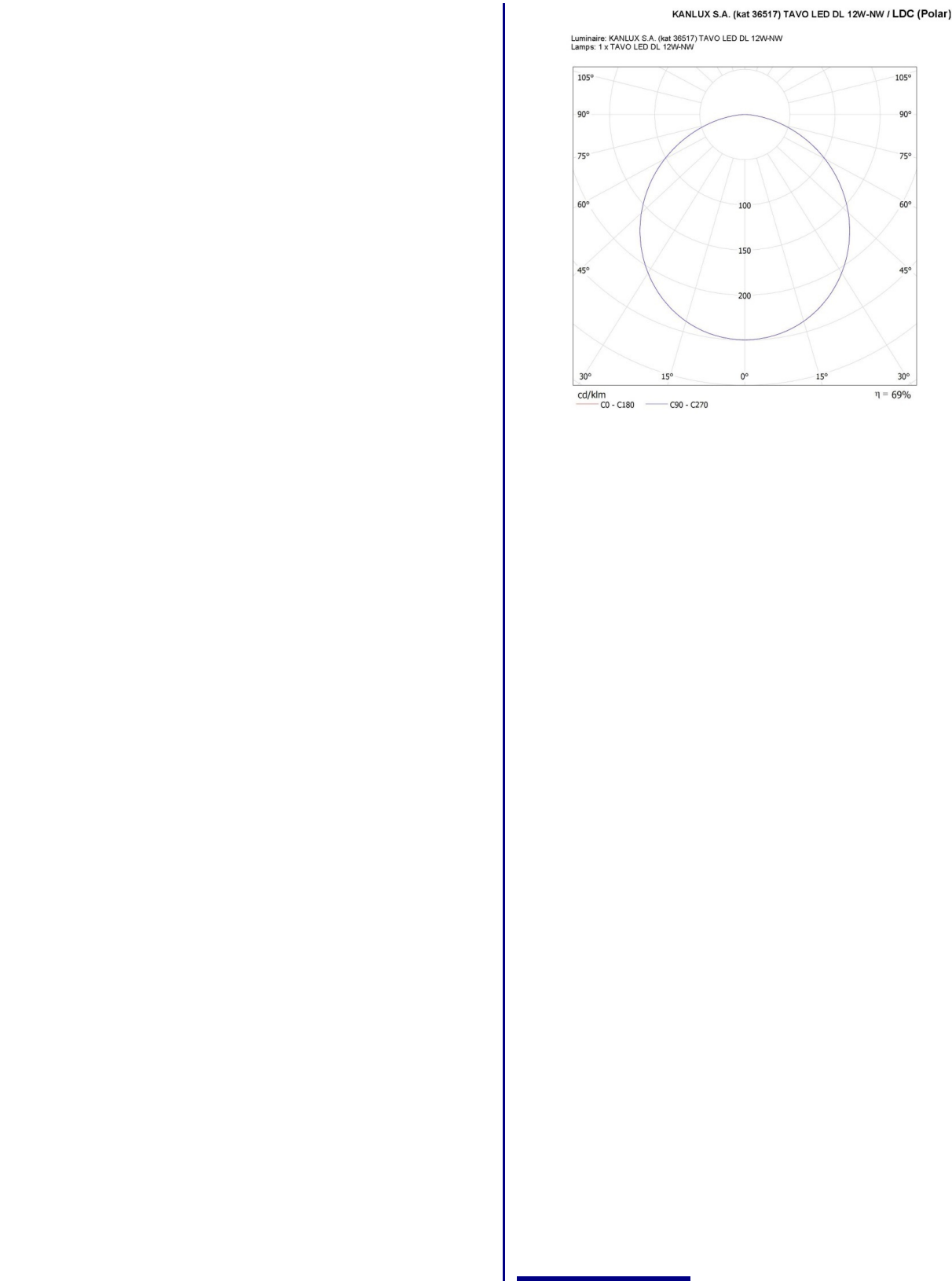
Length of a cardboard box [cm]: 52.5

Volume of a cardboard box [m³]: 0.068434



36517 TAVO LED DL 12W-NW

Downlight fitting



36517 TAVO LED DL 12W-NW

Downlight fitting

ACCESSORIES

36520

TAVO FRAME DO 12W

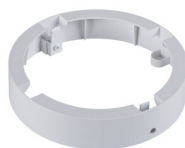
Ramka do montażu natynkowego downlightów Kanlux TAVO LED.



36521

TAVO FRAME DO 18W

Ramka do montażu natynkowego downlightów Kanlux TAVO LED.



36522

TAVO FRAME DL 12W

Ramka do montażu natynkowego downlightów Kanlux TAVO LED.



36523

TAVO FRAME DL 18W

Ramka do montażu natynkowego downlightów Kanlux TAVO LED.

