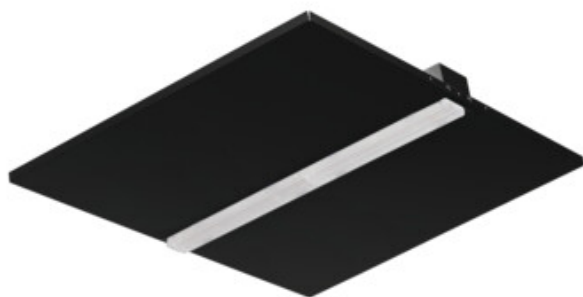


## 37463 KN-M9D-NW-B-P1

Recessed - Mounted LED Office Fixture

5905339374639



KN-B-P1



### GENERAL DATA:

**Colour:** black

**Place of assembly:** Recessed mount in the ceiling

**Place of application:** Indoors

**Minimum distance from the illuminated object :** 0,5m

**Compatible with a dimmer :** no

**The product is not suitable to be covered with a heat-insulating material:** yes

**Length [mm]:** 595

**Width [mm]:** 595

**Height [mm]:** 39

**Integrated LED light source :** yes

### TECHNICAL DATA:

**Rated voltage [V]:** 220-240 AC

**Rated frequency [Hz]:** 50

**Maximum power [W]:** 37

**Class of protection against electric shock :** I

**Lampshade material:** plastic

**Diode type:** LED SMD

**Luminous flux of the light fitting [lm]:** 4700

**Colour temperature:** white

**Correlated colour temperature [K]:** 4000

**Colour consistency in McAdam ellipses :** 6

**Colour rendering index:** 80

**Service life [h]:** 50000

**Luminous-flux-retention factor at the end of rated service life :**  
L90B10

**Number of on/off cycles :**  $\geq 30000$

**Lighting angle [°]:** 90

**Luminous efficiency of the lamp [lm/W]:** 127

**Ambient temperature range to which the product can be exposed:** 5÷25

**Shade type:** soczewka

**Enclosure material:** Metal

**Connection type:** Self-clamping block

**Range of sections of wires used [mm²]:** 1,5÷2,5

**IP class:** 20

### LOGISTIC DATA:

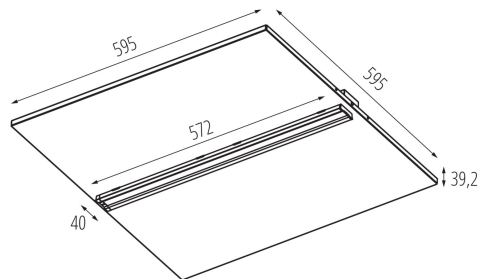
**Unit of measurement:** unit

**Packaging method:** 1

**Number of units in the secondary packaging :** 1

## 37463 KN-M9D-NW-B-P1

Recessed - Mounted LED Office Fixture



**Number of units in the packaging:** 1

**Net unit weight [g]:** 2260

**Grammage [g]:** 2330

**Gross unit weight [g]:** 2330

**Length of a unit pack [cm]:** 63

**Width of a unit pack [cm]:** 63

**Height of a unit pack [cm]:** 5.5

**Weight of a cardboard box [kg]:** 2.33

**Width of a cardboard box [cm]:** 61

**Height of a cardboard box [cm]:** 5.5

**Length of a cardboard box [cm]:** 63

**Volume of a cardboard box [m³]:** 0.021137

KANLUX S.A. (kat 37463) KN-M9D-NW-B-P1 / Krzywa rozsyłu światła (biegunowo)

Oprawa: KANLUX S.A. (kat 37463) KN-M9D-NW-B-P1  
Lampy: 1 x KN-Mx0-NW-P1

