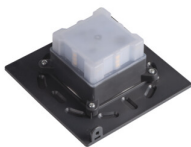
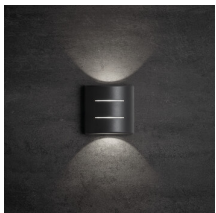


## 39184 REFAZI EL 6W-A-O-GR

Facade luminaire

5905339391841



Kanlux REFAZI are modern façade luminaires that combine simple form with effective lighting. They come in two variants – flat, emitting light from four sides, and semi-circular, shining up and down with an additional accent at the front. The neutral 4000 K light colour accentuates the building's structure, and the IP54 protection rate guarantees resistance to outdoor conditions. The luminaires are available in three colours – white, black and graphite – and are an aesthetic and functional addition to modern façades at an attractive price.

### GENERAL DATA:

**Colour:** graphite

**Place of assembly:** wall mounted

**Place of application:** Indoors and outdoors

**Minimum distance from the illuminated object:** 0,5m

**Compatible with a dimmer:** no

**Wykrywanie ruchu:** no

**Fixture lighting direction:** up and down

**Width [mm]:** 120

**Height [mm]:** 120

**Depth [mm]:** 60

**Integrated LED light source:** yes

### TECHNICAL DATA:

**Rated voltage [V]:** 220-240 AC

**Rated frequency [Hz]:** 50

**Maximum power [W]:** 6

**Class of protection against electric shock:** II

**Lampshade material:** plastic

**Enclosure material:** PC

**Protective glass material:** plastic

**Diode type:** LED SMD

**Luminous flux [lm]:** 60

**Colour temperature:** white

**Correlated colour temperature [K]:** 4000

**Colour consistency in McAdam ellipses:** 6

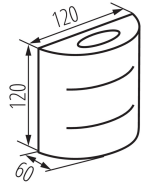
**Colour rendering index:** 80

**Service life [h]:** 25000

**Number of on/off cycles:** ≥12500

## 39184 REFAZI EL 6W-A-O-GR

Facade luminaire



**Luminous efficiency of the lamp [lm/W]:** 10

**Ambient temperature range to which the product can be exposed:** -15÷35

**Connection type:** Bolt terminal block

**Range of sections of wires used [mm<sup>2</sup>]:** 1,5

**IK class:** 08

**IP class:** 54

**Kształt:** round

**Energy efficiency class:** F

### LOGISTIC DATA:

**Unit of measurement:** unit

**Packaging method:** 50

**Number of units in the secondary packaging:** 1

**Number of units in the packaging:** 50

**Net unit weight [g]:** 202

**Grammage [g]:** 258.8

**Length of a unit pack [cm]:** 12.5

**Width of a unit pack [cm]:** 12.5

**Height of a unit pack [cm]:** 5.5

**Weight of a cardboard box [kg]:** 12.94

**Width of a cardboard box [cm]:** 30

**Height of a cardboard box [cm]:** 27

**Length of a cardboard box [cm]:** 64

**Volume of a cardboard box [m<sup>3</sup>]:** 0.05184