

39288 PRO-S M 110W NW

LED fixture

5905339392886



Kanlux PRO-S is a series of modern street luminaires designed with efficiency, durability and ease of installation in mind. Luminous efficacy reaches 160 lm/W, and durability up to 100,000 hours. Durable aluminum alloy housing and IK09 tempered glass guarantee reliability in difficult conditions, and a high IP66 protection level ensures full resistance to dust and moisture. The luminaires allow for adjustment of the tilt angle, installation on Ø50–Ø62 mm poles and quick, tool-free access to the power supply chamber. Integrated SPD 10kV surge protection and programmable power supplies (also with the DALI option) ensure full functionality and safety. The luminaires are available in two sizes: S and M, which allows you to match the solution to specific installation needs. Kanlux PRO-S luminaires are covered by a 5-year manufacturer's warranty.

GENERAL DATA:

Colour: grey

Place of assembly: street pole

Place of application: outdoors

Compatible with a dimmer: no

RAL: 9023

Length [mm]: 605

Width [mm]: 265

Height [mm]: 108

Mercury content: no

Mercury content in the lamp [mg]: 0

TECHNICAL DATA:

Rated voltage [V]: 220-240 AC

Rated frequency [Hz]: 50

Maximum power [W]: 110

Class of protection against electric shock: II

Enclosure material: aluminum alloy

Protective glass material: Tempered glass

Diode type: LED SMD

Luminous flux [lm]: 16540

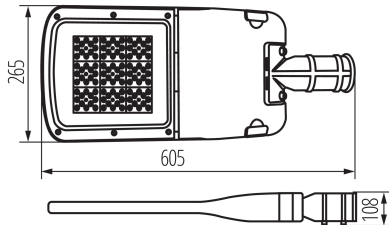
Colour temperature: white

Correlated colour temperature [K]: 4000

Colour consistency in McAdam ellipses: 6

39288 PRO-S M 110W NW

LED fixture



Colour rendering index: 70

Service life [h]: 100000

Luminous-flux-retention factor at the end of rated service life :
L80B10

Number of on/off cycles: ≥ 30000

Lighting angle [°]: X150/Y125

Luminous efficiency of the lamp [lm/W]: 150

Ambient temperature range to which the product can be exposed: $-20 \div 45$

Connection type: Free cable ends

Wire type: H05RN-F

Wire length [m]: 0.4

Wire diameter [mm²]: 0,75-2,5

Overvoltage protection: 10kV

IK class: 08

IP class: 66

LOGISTIC DATA:

Unit of measurement: unit

Packaging method: 1

Number of units in the secondary packaging : 1

Number of units in the packaging : 1

Net unit weight [g]: 4170

Grammage [g]: 4840

Gross unit weight [g]: 4842

Length of a unit pack [cm]: 65.5

Height of a unit pack [cm]: 15.5

Weight of a cardboard box [kg]: 4.84

Width of a cardboard box [cm]: 32.5

Height of a cardboard box [cm]: 15.5

Length of a cardboard box [cm] : 65.5

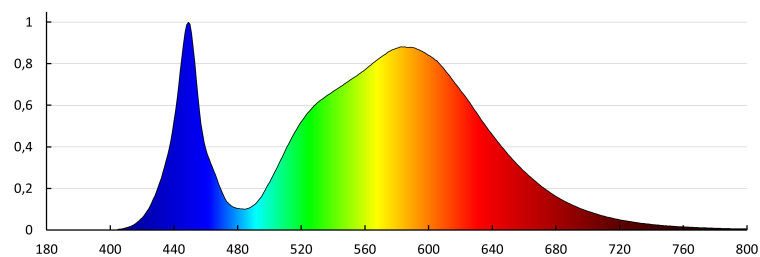
Volume of a cardboard box [m³]: 0.032996

ADDITIONAL INFORMATION:

- 5 years Warranty under the terms of the warranty statement, available on our website

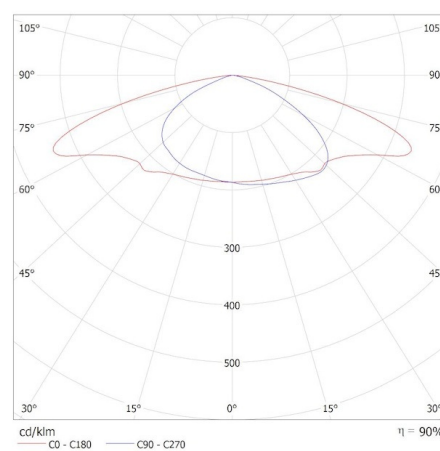
39288 PRO-S M 110W NW

LED fixture



KANLUX S.A. (kat 39288) PRO-S M 110W NW / Krzywa rozsyłu światła (biegunowo)

Oprawa: KANLUX S.A. (kat 39288) PRO-S M 110W NW
Lampy: 1 x PRO-S M 110W NW



Date of issue: 11.06.2025, 10:23

We reserve the right to make technical changes. The data contained in this material are not legally binding.

Photometry: the results obtained from testing were from a specific sample.

Kanlux S.A. ul. Objazdowa 1-3, 41-922 Radzionków, Poland kanlux@kanlux.com