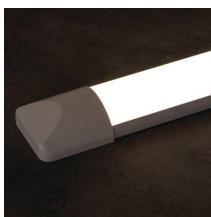
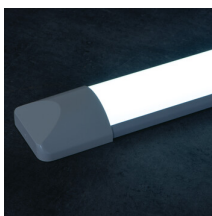


39500 NOBEN M36W-120-CCT

Linear LED luminaire

5905339395009



Kanlux NOBEN is a line of luminaires designed for versatility and simplicity of use. Thanks to the possibility of adjusting the power (in the 120 cm version: 24 W/30 W/36 W, in the 150 cm version: 26 W/34 W/42 W) and selecting the light colour (3000 K, 4000 K, 6500 K), one luminaire can perform various functions depending on the needs of the space. Luminous efficacy of up to 110 lm/W ensures efficient lighting, and IP54 protection allows for use in rooms with high humidity. The slim, flat design and quick connect fittings in the connection compartment make installation rapid and convenient. A service life of 30,000 hours and 30,000 on/off cycles guarantee reliable operation, and a 3-year manufacturer's warranty ensures long-term use.

GENERAL DATA:

Colour: white

Place of assembly: wall mounted, ceiling mounted

Place of application: Indoors and outdoors

Minimum distance from the illuminated object: 0,5m

Compatible with a dimmer: no

Length [mm]: 1200

Width [mm]: 62

Height [mm]: 27

Mercury content: no

Integrated LED light source: yes

Number of modules (LED light source): 1

TECHNICAL DATA:

Rated voltage [V]: 220-240 AC

Rated frequency [Hz]: 50

Maximum power [W]: 24 / 30 / 36

Class of protection against electric shock: II

Lampshade material: PC

Enclosure material: PC

Diode type: LED SMD

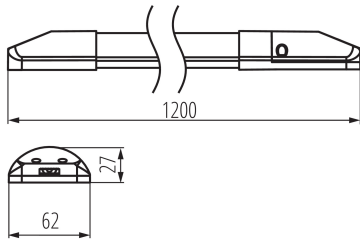
Luminous flux [lm]: max 2970 (NW) / max 3400 (NW) / max 4030 (NW)

Useful luminous flux of the light source Φ_{use} [lm]: 4550

Useful luminous flux of the light source Φ_{use} [lm]: in sphere (360°)

39500 NOBEN M36W-120-CCT

Linear LED luminaire



Colour temperature: Warm white, white, cold white
Correlated colour temperature [K]: 3000/4000/6500

Colour consistency in McAdam ellipses: 6

Colour rendering index: 80

Cap (Light source): -

Service life [h]: 30000

Number of on/off cycles: ≥ 30000

Lighting angle [°]: 120

Ambient temperature range to which the product can be exposed: -20÷35

Connection type: Self-clamping block

Range of sections of wires used [mm²]: 0,5÷1,5

IP class: 54

Kształt: rectangular

LOGISTIC DATA:

Unit of measurement: unit

Packaging method: 25

Number of units in the secondary packaging: 1

Number of units in the packaging: 25

Net unit weight [g]: 276

Grammage [g]: 348

Gross unit weight [g]: 310

Length of a unit pack [cm]: 121.5

Width of a unit pack [cm]: 7

Height of a unit pack [cm]: 3

Weight of a cardboard box [kg]: 8.7

Width of a cardboard box [cm]: 35.5

Height of a cardboard box [cm]: 18

Length of a cardboard box [cm]: 122

Volume of a cardboard box [m³]: 0.077958

ADDITIONAL INFORMATION:

- 3 years Warranty under the terms of the warranty statement, available on our website