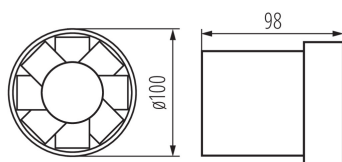
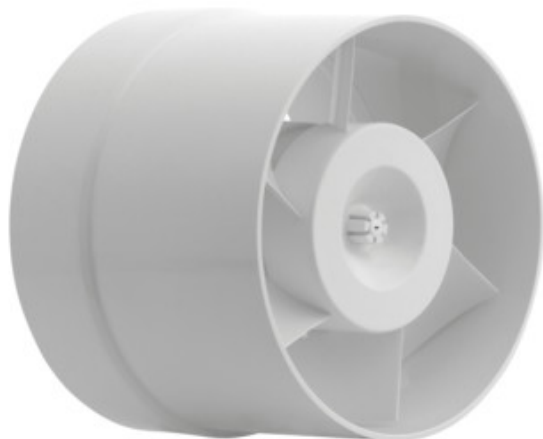


Ducted fan

5905339709004



Kanlux WIR WK series of fans is available in three sizes with diameter of 100, 120 and 150mm. They are made of plastic, in white colour. Their power is 19, 20 and 22W respectively. The number of rotations from each size comes to 2550/min.

### GENERAL DATA:

**Colour:** white

**Place of assembly:** Recessed mount in the wall

**Place of application:** Indoors

**Width [mm]:** 98

**Diameter [mm]:** 100

**Assembly hole [mm]:** Ø100

### TECHNICAL DATA:

**Rated voltage [V]:** 220-240 AC

**Rated frequency [Hz]:** 50

**Maximum power [W]:** 19

**Class of protection against electric shock:** II

**Engine rotation:** 2550

**Bearing type:** Not applicable

**Connection type:** Terminal block

**Range of sections of wires used [mm<sup>2</sup>]:** 1

**Sound pressure [dB]:** 39

**Air-flow volume rate [m<sup>3</sup>/h]:** 100

**Motor-power consumption [W]:** 19

**IP class:** X4

**Protection class:** II

### LOGISTIC DATA:

**Packaging method:** 12

**Number of units in the packaging:** 12

**Net unit weight [g]:** 400

**Grammage [g]:** 479.17

**Length of a unit pack [cm]:** 11.5

**Width of a unit pack [cm]:** 11.5

**Height of a unit pack [cm]:** 10.5

**Weight of a cardboard box [kg]:** 5.75004

**Width of a cardboard box [cm]:** 23

**Height of a cardboard box [cm]:** 22

**Length of a cardboard box [cm]:** 35

**Volume of a cardboard box [m<sup>3</sup>]:** 0.01771

Ducted fan

### ADDITIONAL INFORMATION:

- Rotation speed: 2550/min
- efficiency for WIR WK-10 100m<sup>3</sup>/h, for WIR WK-12 – 150m<sup>3</sup>/h, for WIR WK-15 – 200m<sup>3</sup>/h
- noise level for WIR WK-10 – 39dB (A), for the other models – 41dB (A)