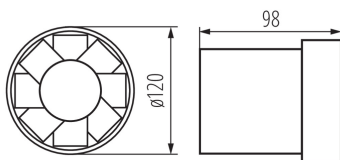
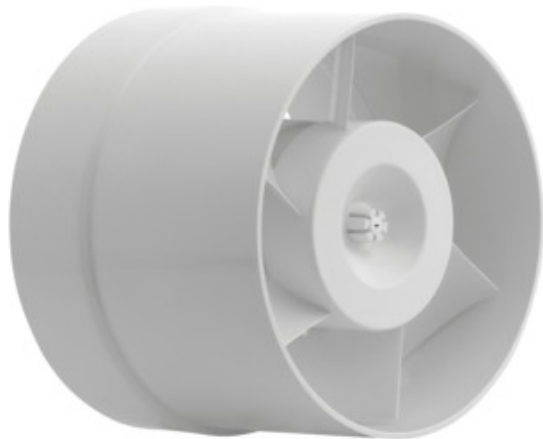


Ducted fan

5905339709011



Kanlux WIR WK series of fans is available in three sizes with diameter of 100, 120 and 150mm. They are made of plastic, in white colour. Their power is 19, 20 and 22W respectively. The number of rotations from each size comes to 2550/min.

GENERAL DATA:

Colour: white

Place of assembly: Recessed mount in the wall

Place of application: Indoors

Width [mm]: 98

Diameter [mm]: 120

Assembly hole [mm]: Ø120

TECHNICAL DATA:

Rated voltage [V]: 220-240 AC

Rated frequency [Hz]: 50

Maximum power [W]: 20

Class of protection against electric shock: II

Engine rotation: 2550

Bearing type: Not applicable

Connection type: Terminal block

Range of sections of wires used [mm²]: 1

Sound pressure [dB]: 41

Air-flow volume rate [m³/h]: 150

Motor-power consumption [W]: 20

IP class: X4

Protection class: II

LOGISTIC DATA:

Packaging method: 12

Number of units in the packaging: 12

Net unit weight [g]: 490

Grammage [g]: 591.67

Length of a unit pack [cm]: 13

Width of a unit pack [cm]: 13

Height of a unit pack [cm]: 10.5

Weight of a cardboard box [kg]: 7.10004

Width of a cardboard box [cm]: 27

Height of a cardboard box [cm]: 23

Length of a cardboard box [cm]: 40

Volume of a cardboard box [m³]: 0.02484

Ducted fan

ADDITIONAL INFORMATION:

- Rotation speed: 2550/min
- efficiency for WIR WK-10 100m³/h, for WIR WK-12 – 150m³/h, for WIR WK-15 – 200m³/h
- noise level for WIR WK-10 – 39dB (A), for the other models – 41dB (A)