

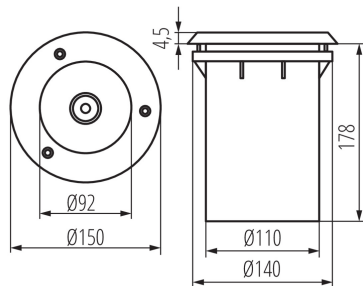
In-ground lighting fitting

5905339071958



IP
67

10IK



Kanlux XARD ground recessed luminaire is characterised by the highest level of resistance to mechanical damage - the so-called “vandal-resistance” - IK10. Add to this a high rating of tightness (IP67) and we get a luminaire which is a great solution for lighting facades of buildings, squares, terraces, parks, paths, passages, driveways, stairs, etc.

GENERAL DATA:

Colour: stainless steel

Place of assembly: In the ground

Place of application: Indoors and outdoors

Minimum distance from the illuminated object: 0,5m

Fixture lighting direction: Top

Height [mm]: 183

Diameter [mm]: 150

Number of chokes: 1

TECHNICAL DATA:

Rated voltage [V]: 220-240 AC

Rated frequency [Hz]: 50

Maximum power [W]: max 40

Class of protection against electric shock: I

Light source: A60

Light source included: no

Cap: E27

Ambient temperature range to which the product can be exposed: -20÷35

Enclosure material: aluminum alloy

Panel/frame material: stainless steel

Protective glass material: Tempered glass

Connection type: Free cable ends

Wire length [m]: 0.22

Wire diameter [mm²]: 1

Permissible static pressure [kN]: 20

IK class: 10

IP class: 67

LOGISTIC DATA:

Packaging method: 6

Number of units in the packaging: 6

Net unit weight [g]: 1120

Grammage [g]: 1366.67

Length of a unit pack [cm]: 15.5

Width of a unit pack [cm]: 15.5

Height of a unit pack [cm]: 20

Weight of a cardboard box [kg]: 8.20002
Width of a cardboard box [cm]: 16.5
Height of a cardboard box [cm]: 42.5
Length of a cardboard box [cm] : 47
Volume of a cardboard box [m³]: 0.032959

ADDITIONAL INFORMATION:

- Junction box included
- total light source length max 110 mm

KANLUX S.A. (kat 7195) XARD DL-40 / Krzywa rozsytu światła (biegunowo)

Oprawa: KANLUX S.A. (kat 7195) XARD DL-40
Lampy: 1 x TC-QSE 16W/827

