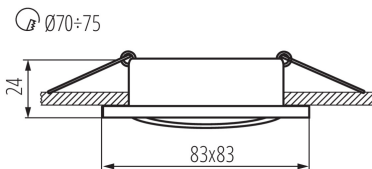
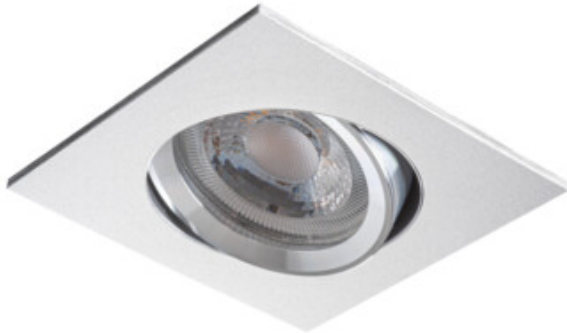


07361 RADAN CT-DTL50

Ceiling-mounted spotlight fitting

5905339073617



Kanlux RADAN are simple eyes which will light up each room. You can choose a source of light and a version of the holder on your own - with adjustment or immovable.

GENERAL DATA:

Colour: aluminium

Necessity of using self-shielding lamps : yes

Place of assembly: Recessed mount in the ceiling

Place of application: Indoors

Minimum distance from the illuminated object : 0,5m

The product is not suitable to be installed on a normally flammable surface: >35W

The product is not suitable to be covered with a heat-insulating material: yes

Length [mm]: 83

Width [mm]: 83

Height [mm]: 24

Assembly hole [mm]: Ø70-75

TECHNICAL DATA:

Rated voltage [V]: 12 AC; 12 DC

Maximum power [W]: max 10

Class of protection against electric shock : III

Light source : MR16

Light source included: no

Cap: Gx5,3

Ambient temperature range to which the product can be exposed: 5÷25

Enclosure material: aluminum alloy

Connection type: Free cable ends

Wire length [m]: 0.12

Wire diameter [mm²]: 0.75

Lighting-fixture angle regulation : in one axis

Lighting-fixture angle regulation [°]: 30

IP class: 20

LOGISTIC DATA:

Unit of measurement: unit

Packaging method: 50

Number of units in the packaging: 50

Net unit weight [g]: 80

Grammage [g]: 114

Length of a unit pack [cm]: 10

07361 RADAN CT-DTL50

Ceiling-mounted spotlight fitting



Width of a unit pack [cm] : 4

Height of a unit pack [cm] : 10

Weight of a cardboard box [kg] : 5.7

Width of a cardboard box [cm] : 22.5

Height of a cardboard box [cm] : 23

Length of a cardboard box [cm] : 53

Volume of a cardboard box [m³] : 0.027428