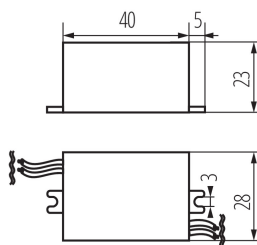


01440 ADI 350 1x3W

CC power supply unit

5905339014405



Kanlux ADI electronic power supply unit - with maximum permissible temperature of casing 75°C and current stabilization 350mA DC - has an embedded protection against short circuits and against overload as well as a thermal protection turning off the power supply unit when the temperature of 110°C is exceeded.

PRODUCT PARAMETERS:

Colour: white

Place of application: Indoors

Possibility of installation on a normally flammable surface: yes

The product is not suitable to be covered with a heat-insulating material: yes

Length [mm]: 28

Height [mm]: 23

Rated voltage [V]: 220-240 AC

Rated frequency [Hz]: 50

Maximum power [W]: 1-3

Class of protection against electric shock: II

Material: plastic

Ambient temperature range to which the product can be exposed: 5÷25

Connection type: Free cable ends

Wire length [m]: 0.1

Wire diameter [mm²]: 0.75

Supply-cord type: direct current

Overload protection: yes

Thermal protection: 110°C

Short-circuit protection: yes

Maximum temperature Ta [°C]: 50

Input voltage - PRI [V]: 220-240

Output voltage - SEC [V]: 0,5-10 DC

Output current - sec [ma]: 350

IP class: 20

Tc [°C]: 85

LOGISTIC DATA:

Packaging method: 100

Number of units in the packaging: 100

Net unit weight [g]: 42

Grammage [g]: 54

Length of a unit pack [cm]: 4

Width of a unit pack [cm]: 3

Height of a unit pack [cm]: 6.5

01440 ADI 350 1x3W

CC power supply unit

Weight of a cardboard box [kg]: 5.4**Width of a cardboard box [cm]:** 17**Height of a cardboard box [cm]:** 18**Length of a cardboard box [cm] :** 43**Volume of a cardboard box [m³]:** 0.013158**ADDITIONAL INFORMATION:**

- ADI 350 1-3W current stabilization 350mA DC
- ADI 700 1x3W current stabilization 700mA DC
- Maximum permissible housing temperature 75°C
- Thermal protection shutting down the power supply after the temperature exceeds 110°C
- Built-in circuit and overload protection