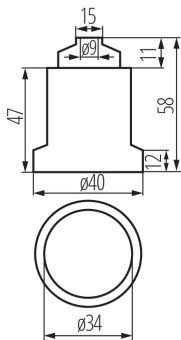


02162 HLDR-E27-D

Light source fitting

5905339021625



PRODUCT PARAMETERS:

Colour: grey

Installation method: directly

Height [mm]: 47

Rated voltage [V]: 250 AC

Rated current [A]: 4

Rated frequency [Hz]: 50

Cap: E27

Connection type: Terminal block

Type: E27

Maximum operating temperature [°C]: 180

IP class: 00

LOGISTIC DATA:

Packaging method: 20

Number of units in the secondary packaging: 20

Number of units in the packaging: 400

Net unit weight [g]: 56

Grammage [g]: 58.75

Length of a unit pack [cm]: 4

Width of a unit pack [cm]: 4

Height of a unit pack [cm]: 5.5

Weight of a cardboard box [kg]: 23.5

Width of a cardboard box [cm]: 34

Height of a cardboard box [cm]: 32

Length of a cardboard box [cm]: 40

Volume of a cardboard box [m³]: 0.04352

ADDITIONAL INFORMATION:

- Maximum permissible holder temperature 180°C