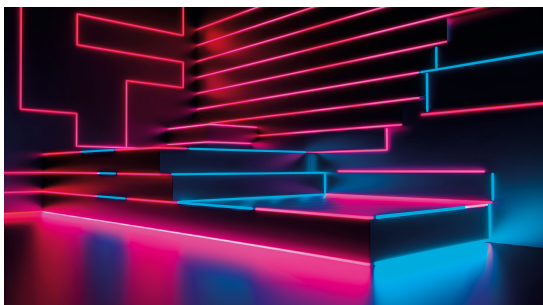
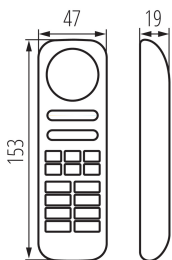


22139 REMOTE 8 RGBW/CCT-W

Remote controls for LED strips

5905339221391



Advanced eight-zone remote control designed to control RGB W, RGB CCT strips. It allows for individual lighting settings in each zone. The Kanlux REMOTE 8 RGB/CCT-W remote control allows you to adjust the brightness, color temperature of the light and color. For correct operation, it requires a controller for LED strips CTRL 12/24V RGBW CCT (Kanlux code: 22148).

PRODUCT PARAMETERS:

Colour: white
Control: RF 2,4GHz
Batteries included: no
Battery-power supply: yes
Rated voltage [V]: 2 x 1,5 DC
Class of protection against electric shock : III
Material: plastic
Transmitter batteries: 2 x AAA
IP class: 20
Range [m]: max 30
Maximum number of supported lighting zones : 8
Standard support: RGB+W CCT (CW NW WW) DIM
Type: Remote controls for LED strips

LOGISTIC DATA:

Unit of measurement: unit
Packaging method: 100
Number of units in the secondary packaging : 1
Number of units in the packaging: 100
Net unit weight [g]: 80
Grammage [g]: 114.5
Gross unit weight [g]: 107.5
Length of a unit pack [cm]: 15.7
Width of a unit pack [cm]: 5.5
Height of a unit pack [cm]: 3.5
Weight of a cardboard box [kg]: 11.45
Width of a cardboard box [cm]: 28.5
Height of a cardboard box [cm]: 33.5
Length of a cardboard box [cm]: 37.5
Volume of a cardboard box [m³]: 0.035803

22139 REMOTE 8 RGBW/CCT-W

Remote controls for LED strips