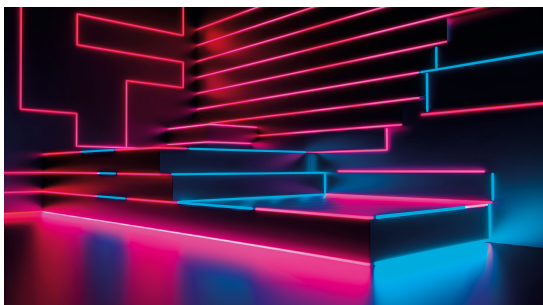
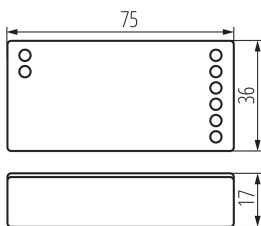


22148 CTRL 12/24V RGBW CCT

Controller for LED tapes

5905339221483



The controller is compatible with single-colour LED strips and RGB/RGB W LED strips. It can cooperate with RGB CCT remote controls.

A four-channel remote control (code Kanlux 22146) is required for full operation.

PRODUCT PARAMETERS:

Colour: white

Control: RF 2,4GHz

Length [mm]: 75

Width [mm]: 36

Height [mm]: 17

Rated voltage [V]: 12 DC; 24 DC

Rated current [A]: max 10

Class of protection against electric shock : III

Material: plastic

Connection type: Terminal block

IP class: 20

Range [m]: max 30

Type: Controller for LED tapes

LOGISTIC DATA:

Unit of measurement: unit

Packaging method: 200

Number of units in the secondary packaging : 1

Number of units in the packaging : 200

Net unit weight [g] : 32

Grammage [g] : 54.75

Gross unit weight [g] : 52

Length of a unit pack [cm] : 7.5

Width of a unit pack [cm] : 4

Height of a unit pack [cm] : 3.5

Weight of a cardboard box [kg] : 10.95

Width of a cardboard box [cm] : 37.5

Height of a cardboard box [cm] : 18

Length of a cardboard box [cm] : 42

Volume of a cardboard box [m³] : 0.02835

22148 CTRL 12/24V RGBW CCT

Controller for LED tapes