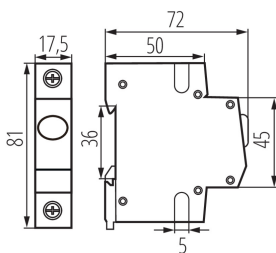


23321 KLI-G

TH35 rail-mounted voltage detector

5905339233219



LED light indicator is used to signal the status of electrical circuits.

PRODUCT PARAMETERS:

Colour: white

Place of assembly: rail TH35

Norm: PN-EN 60947-5-1

Number of fields: 1

Rated voltage [V]: 220-240 AC

Rated frequency [Hz]: 50

Number of modules: 1

IP class: 20

LOGISTIC DATA:

Packaging method: 12

Number of units in the secondary packaging: 12

Number of units in the packaging: 120

Net unit weight [g]: 60

Grammage [g]: 70

Length of a unit pack [cm]: 7.5

Width of a unit pack [cm]: 2

Height of a unit pack [cm]: 8.5

Weight of a cardboard box [kg]: 8.4

Width of a cardboard box [cm]: 25

Height of a cardboard box [cm]: 19.5

Length of a cardboard box [cm]: 45

Volume of a cardboard box [m³]: 0.021938