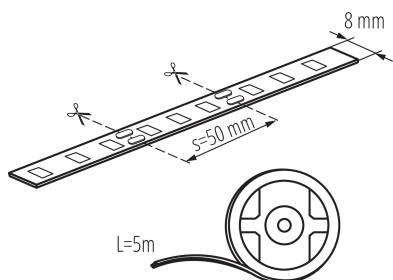


24516 LEDS-B 4.8W/M IP00-WW

LED tape

5905339245168



Kanlux LEDS-B are modern strips of decorative character. Perfect for home use where they can create unique arrangements limited by our imagination only. They are characterised by high flexibility, good adhesion and high durability. Depending on the place in which we want to add more light or which we wish to highlight, we can choose the light colour suiting our preferences.

TYPE OF LIGHT SOURCE:

Lighting technology used: LED

Non-directional or directional light source: NDLS

Mains or non-mains light source: NMLS

Connected light source (CLS): no

Colour-tuneable light source: no

High luminance light source: no

Anti-glare shield: no

Dimmable: only with specific dimmers

PRODUCT PARAMETERS:

Place of application: Indoors

Minimum distance from the illuminated object: 0,1m

Length [mm]: 5000

Width [mm]: 8

Height [mm]: 5000

Depth [mm]: 1

Rated voltage [V]: 12 DC

Rated power [W]: 1m = 4,8

Class of protection against electric shock: III

Diode type: LED SMD

Luminous flux [lm]: 1m = 450

Colour temperature: Warm white

Rated lamp-service life [h]: 15000

Number of on/off cycles: ≥10000

Ambient temperature range to which the product can be exposed: 5÷25

Connection type: Free cable ends

IP class: 00

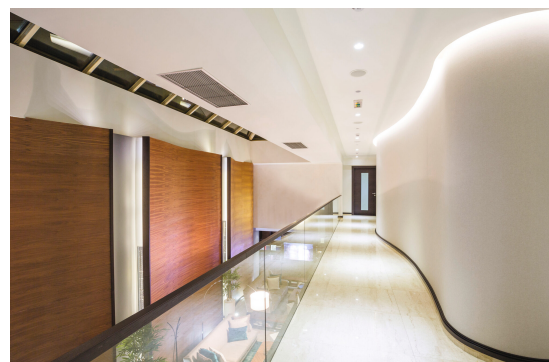
Additional information: Light source (LS)

Mercury content: no

Mercury content in the lamp [mg]: 0

24516 LEDS-B 4.8W/M IP00-WW

LED tape

**PARAMETERS FOR LED AND OLED LIGHT SOURCES:**

Energy consumption in on-mode of the light source

(kWh/1000h): 3

Energy efficiency class: F

Useful luminous flux of the light source Φ_{use} [lm]: 0,5m=225

Useful luminous flux of the light source Φ_{use} [lm]: in sphere
(360°)

Correlated colour temperature [K]: 3000

Colour consistency in McAdam ellipses: ≤ 6

On-mode power of the light source P_{on} [W]: 0,5m = 2,4

Colour rendering index: 80

Chromaticity coordinates (x): 0.44

Chromaticity coordinates (y): 0.403

Claim of equivalent power [W]: 22

R9 colour rendering index value: -32

Survival factor: 0.9

The lumen maintenance factor: 0.93

**PARAMETERS FOR LED AND OLED
MAINS LIGHT SOURCES:**

**LED light source replaces a fluorescent light source without
integrated ballast of a particular wattage:** Not applicable

LOGISTIC DATA:

Unit of measurement: unit

Packaging method: 25

Number of units in the secondary packaging: 25

Number of units in the packaging: 50

Net unit weight [g]: 56

Grammage [g]: 95.4

Gross unit weight [g]: 80

Length of a unit pack [cm]: 20.5

Width of a unit pack [cm]: 1

Height of a unit pack [cm]: 22.5

Weight of a cardboard box [kg]: 4.77

Width of a cardboard box [cm]: 30

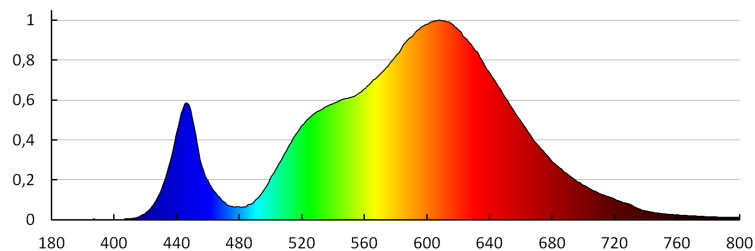
Height of a cardboard box [cm]: 29

Length of a cardboard box [cm]: 46

Volume of a cardboard box [m³]: 0.04002

24516 LEDS-B 4.8W/M IP00-WW

LED tape



ACCESSORIES

19030

CONNECTOR 8

LED band connector,
CONNECTOR 8
(19030)



19032

CONNECTOR 8-CP

LED band connector,
CONNECTOR 8-CP
(19032)



19033

CONNECTOR 8-CPC

LED band connector,
CONNECTOR 8-CPC
(19033)

