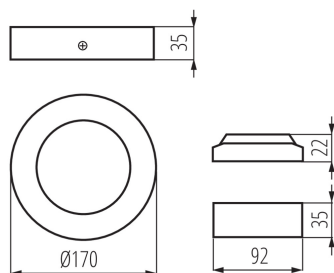
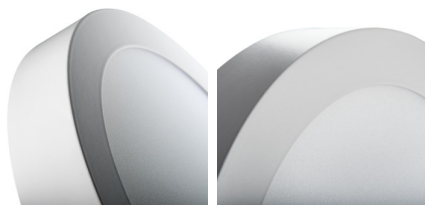


## 27210 CARSA V2LED 12W-NW-SN

Downlight fitting

5905339272102



Kanlux CARSA V2 LED is a round façade luminaire characterised by harmonious combination of LED technology with attractive and modern looks. It is distinguished by high energy efficiency with maintained excellent light parameters. Kanlux CARSA V2 LED is perfect for lighting residential interiors and office rooms.

### TYPE OF LIGHT SOURCE:

**Lighting technology used:** LED

**Non-directional or directional light source:** NDLS

**Mains or non-mains light source:** MLS

**Connected light source (CLS):** no

**Colour-tuneable light source:** no

**Envelope:** none

**High luminance light source:** no

**Anti-glare shield:** no

**Dimmable:** no

### PRODUCT PARAMETERS:

**Colour:** nickel satin

**Place of assembly:** ceiling mounted

**Place of application:** Indoors

**Minimum distance from the illuminated object:** 0,5m

**Compatible with a dimmer:** no

**The product is not suitable to be covered with a heat-insulating material:** yes

**Height [mm]:** 35

**Diameter [mm]:** 170

**Integrated LED light source:** yes

**Rated voltage [V]:** 220-240 AC

**Rated frequency [Hz]:** 50

**Maximum power [W]:** 12

**Class of protection against electric shock:** II

**Lampshade material:** plastic

**Diode type:** LED SMD

**Luminous flux [lm]:** 720

**Colour temperature:** white

**Service life [h]:** 15000

**Number of on/off cycles:** ≥20000

**Lighting angle [°]:** 110

**Ambient temperature range to which the product can be exposed:** 5÷25

**Enclosure material:** aluminum alloy

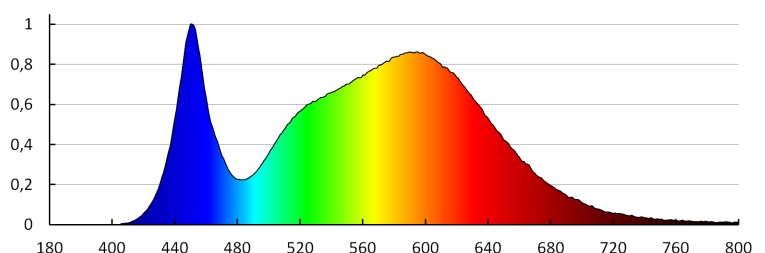
**Connection type:** Free cable ends

**Wire length [m]:** 0.05

**Wire diameter [mm²]:** 0.75

**27210 CARSA V2LED 12W-NW-SN**

Downlight fitting

**Lamp-heating time [s]:** ≤1**Lamp-ignition time [s]:** ≤0,5**IP class:** 20**PARAMETERS FOR LED AND OLED LIGHT SOURCES:****Energy efficiency class:** E**Correlated colour temperature [K]:** 4000**Colour consistency in McAdam ellipses:** ≤6**Colour rendering index:** 80**PARAMETERS FOR LED AND OLED MAINS LIGHT SOURCES:****LED light source replaces a fluorescent light source without integrated ballast of a particular wattage:** Not applicable**LOGISTIC DATA:****Packaging method:** 30**Number of units in the secondary packaging:** 1**Number of units in the packaging:** 30**Net unit weight [g]:** 360**Grammage [g]:** 450.33**Length of a unit pack [cm]:** 17.5**Width of a unit pack [cm]:** 4.5**Height of a unit pack [cm]:** 17.5**Weight of a cardboard box [kg]:** 13.5099**Width of a cardboard box [cm]:** 48**Height of a cardboard box [cm]:** 21**Length of a cardboard box [cm]:** 55**Volume of a cardboard box [m³]:** 0.05544

**27210 CARSA V2LED 12W-NW-SN**

Downlight fitting

KANLUX S.A. (kat 27210) CARSA V2LED 12W-NW-SN / LDC (Polar)

Luminaire: KANLUX S.A. (kat 27210) CARSA V2LED 12W-NW-SN  
Lamps: 1 x CARSA V2LED 12W-NW-SN