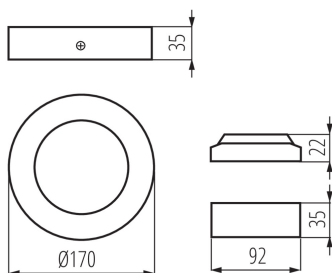
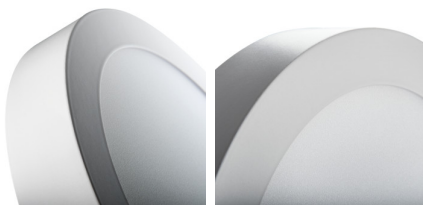


28948 CARSA V2LED 12W-NW-W

Downlight fitting

5905339289483



Kanlux CARSA V2 LED is a round façade luminaire characterised by harmonious combination of LED technology with attractive and modern looks. It is distinguished by high energy efficiency with maintained excellent light parameters. Kanlux CARSA V2 LED is perfect for lighting residential interiors and office rooms.

TYPE OF LIGHT SOURCE:

Lighting technology used: LED

Non-directional or directional light source: NDLS

Mains or non-mains light source: MLS

Connected light source (CLS): no

Colour-tuneable light source: no

Envelope: none

High luminance light source: no

Anti-glare shield: no

Dimmable: no

PRODUCT PARAMETERS:

Colour: white

Place of assembly: ceiling mounted

Place of application: Indoors

Minimum distance from the illuminated object: 0,5m

Compatible with a dimmer: no

The product is not suitable to be covered with a heat-insulating material: yes

Height [mm]: 35

Diameter [mm]: 170

Integrated LED light source: yes

Rated voltage [V]: 220-240 AC

Rated frequency [Hz]: 50

Maximum power [W]: 12

Class of protection against electric shock: II

Lampshade material: plastic

Diode type: LED SMD

Luminous flux [lm]: 780

Colour temperature: white

Service life [h]: 15000

Number of on/off cycles: ≥20000

Lighting angle [°]: 110

Ambient temperature range to which the product can be exposed: 5÷25

Enclosure material: aluminum alloy

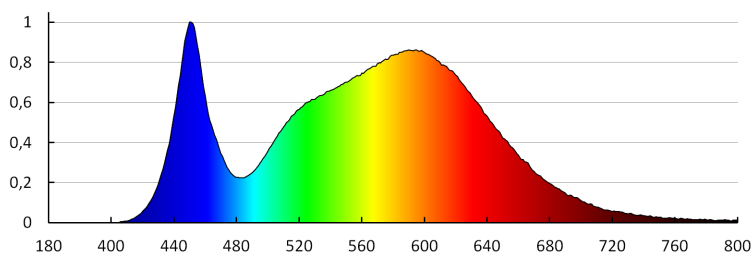
Connection type: Free cable ends

Wire length [m]: 0.05

Wire diameter [mm²]: 0.75

28948 CARSA V2LED 12W-NW-W

Downlight fitting

**Lamp-heating time [s]:** ≤1**Lamp-ignition time [s]:** ≤0,5**IP class:** 20**PARAMETERS FOR DIRECTIONAL LIGHT SOURCES:****Beam angle [°]:** 110**PARAMETERS FOR LED AND OLED LIGHT SOURCES:****Energy consumption in on-mode of the light source (kWh/1000h):** 12**Energy efficiency class:** E**Useful luminous flux of the light source Φ_{use} [lm]:** 1400**Useful luminous flux of the light source Φ_{use} [lm]:** in sphere (360°)**Correlated colour temperature [K]:** 4000**Colour consistency in McAdam ellipses:** ≤6**On-mode power of the light source P_{on} [W]:** 12**Colour rendering index:** 80**PARAMETERS FOR LED AND OLED MAINS LIGHT SOURCES:****LED light source replaces a fluorescent light source without integrated ballast of a particular wattage:** Not applicable**LOGISTIC DATA:****Packaging method:** 30**Number of units in the secondary packaging:** 1**Number of units in the packaging:** 30**Net unit weight [g]:** 310**Grammage [g]:** 406**Length of a unit pack [cm]:** 17.5**Width of a unit pack [cm]:** 4.5**Height of a unit pack [cm]:** 17.5**Weight of a cardboard box [kg]:** 12.18**Width of a cardboard box [cm]:** 48**Height of a cardboard box [cm]:** 21**Length of a cardboard box [cm]:** 55**Volume of a cardboard box [m³]:** 0.05544

28948 CARSA V2LED 12W-NW-W

Downlight fitting

KANLUX S.A. (kat 28948) CARSA V2LED 12W-NW-W / LDC (Polar)

Luminaire: KANLUX S.A. (kat 28948) CARSA V2LED 12W-NW-W
Lamps: 1 x CARSA V2LED 12W-NW-W

