

29585 AREL LED DO 10W-WW

Downlight fitting

5905339295859

IP
65/20

ultra
SLIM
panel

HIGH
quality



Kanlux AREL LED is a new family of downlights which do not have frame. High tightness class IP65/20 and exceptional, simple, and at the same time surprising design make Kanlux AREL LED fit into each interior. Thanks to the unique structure, the panel is only 9 mm thick - it is the thinnest panel available on the market.

TYPE OF LIGHT SOURCE:

Lighting technology used: LED

Non-directional or directional light source: NDLS

Mains or non-mains light source: NMLS

Connected light source (CLS): no

Colour-tuneable light source: no

High luminance light source: no

Anti-glare shield: no

Dimmable: no

PRODUCT PARAMETERS:

Colour: white

Place of assembly: Recessed mount in the ceiling

Place of application: Indoors

Minimum distance from the illuminated object: 0,5m

Compatible with a dimmer: no

The product is not suitable to be covered with a heat-insulating material: yes

Height [mm]: 23

Diameter [mm]: 126

Assembly hole [mm]: Ø110

Integrated LED light source: yes

Rated voltage [V]: 220-240 AC

Rated frequency [Hz]: 50

Maximum power [W]: 10

Class of protection against electric shock: II

Lampshade material: PMMA

Diode type: LED SMD

LED module: DL-4014-06P11S-483630-R125-V35 ID33239 92388

Luminous flux [lm]: 890

Colour temperature: Warm white

Service life [h]: 15000

Number of on/off cycles: ≥30000

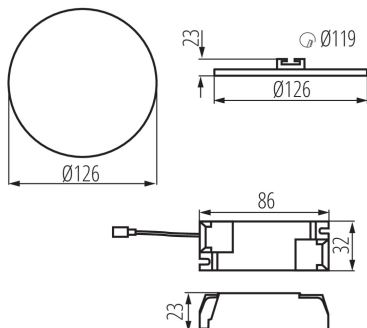
Lighting angle [°]: 120

Ambient temperature range to which the product can be exposed: 5÷25

Enclosure material: aluminum alloy

29585 AREL LED DO 10W-WW

Downlight fitting



Connection type: Terminal block

Range of sections of wires used [mm²]: 0,75-1,5

Lamp-heating time [s]: ≤1

Lamp-ignition time [s]: ≤0,5

IP class: 65/20

Additional information: It is not possible to replace the LED light source

Additional information: The control panel or control equipment can be replaced by the end user

PARAMETERS FOR LED AND OLED LIGHT SOURCES:

Energy consumption in on-mode of the light source (kWh/1000h): 8

Energy efficiency class: D

Useful luminous flux of the light source Φ_{use} [lm]: 1200

Useful luminous flux of the light source Φ_{use} [lm]: in sphere (360°)

Correlated colour temperature [K]: 3000

Colour consistency in McAdam ellipses: ≤6

On-mode power of the light source P_{on} [W]: 7.9

Height of the light source [mm]: 363

Width of the light source [mm]: 5

Depth of the light source [mm]: 1

Colour rendering index: 80

Chromaticity coordinates (x): 0.44

Chromaticity coordinates (y): 0.403

Claim of equivalent power [W]: 82

R9 colour rendering index value: 2

Survival factor: 0,9

The lumen maintenance factor: 0,93

LOGISTIC DATA:

Packaging method: 100

Number of units in the secondary packaging: 1

Number of units in the packaging: 100

Net unit weight [g]: 154

Grammage [g]: 208.9

Length of a unit pack [cm]: 15.5

Width of a unit pack [cm]: 3

Height of a unit pack [cm]: 16

Weight of a cardboard box [kg]: 20.89

Width of a cardboard box [cm]: 33

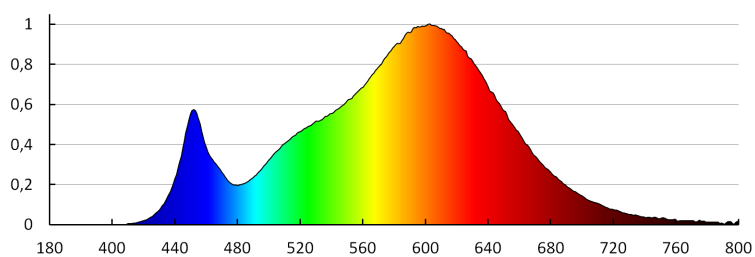
Height of a cardboard box [cm]: 34

Length of a cardboard box [cm]: 78

Volume of a cardboard box [m³]: 0.087516

29585 AREL LED DO 10W-WW

Downlight fitting



KANLUX S.A. (kat 29585) AREL LED DO 10W-WW / LDC (Polar)

Luminaire: KANLUX S.A. (kat 29585) AREL LED DO 10W-WW
Lamps: 1 x AREL LED DO 10W-WW

