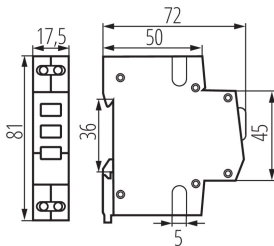


## 32894 KLI-3G

TH35 rail-mounted voltage detector

5905339328946



### PRODUCT PARAMETERS:

**Colour:** white

**Place of assembly:** rail TH35

**Norm:** PN-EN 60947-5-1

**Length [mm]:** 72

**Width [mm]:** 17.5

**Height [mm]:** 81

**Number of fields:** 1

**Rated voltage [V]:** 230 AC

**Rated current [A]:** 2.5

**Rated frequency [Hz]:** 50

**Connection type:** Terminal block

**Range of sections of wires used [mm<sup>2</sup>]:** max 2,5

**Number of modules:** 1

**Power consumption [W]:** 0.6

**IP class:** 20

### LOGISTIC DATA:

**Packaging method:** 12

**Number of units in the secondary packaging:** 12

**Number of units in the packaging:** 120

**Net unit weight [g]:** 44

**Grammage [g]:** 52.42

**Length of a unit pack [cm]:** 7.5

**Width of a unit pack [cm]:** 2

**Height of a unit pack [cm]:** 8.5

**Weight of a cardboard box [kg]:** 6.2904

**Width of a cardboard box [cm]:** 24

**Height of a cardboard box [cm]:** 19.5

**Length of a cardboard box [cm]:** 46

**Volume of a cardboard box [m<sup>3</sup>]:** 0.021528