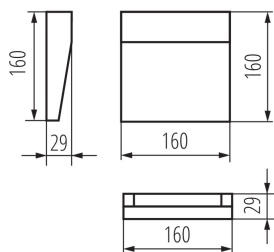
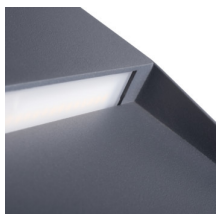


33752 DULI LED 6,5W-NW-L-GR

Surface-mounted light fitting

5905339337528



Kanlux DULI LED is a series of surface-mounted, façade luminaires. Modern and geometric design in a simple form makes this series very universal. A matte graphite finish and the most popular colour temperature for architectural luminaires (4000K) are other advantages. Kanlux DULI LED is decorative accent lighting that illuminates spaces around the building. Kanlux DULI LED surface-mounted luminaires are powered by 230V without using an additional power supply unit.

TYPE OF LIGHT SOURCE:

Lighting technology used: LED

Non-directional or directional light source: NDLS

Mains or non-mains light source: NMLS

Connected light source (CLS): no

Colour-tunable light source: no

High luminance light source: no

Anti-glare shield: no

Dimmable: no

PRODUCT PARAMETERS:

Colour: anthracite

Place of assembly: wall mounted

Place of application: Indoors and outdoors

Minimum distance from the illuminated object: 0,2m

Compatible with a dimmer: no

RAL: 7016

Width [mm]: 160

Height [mm]: 160

Depth [mm]: 29

Integrated LED light source: yes

Rated voltage [V]: 220-240 AC

Rated frequency [Hz]: 50

Maximum power [W]: 6,5

Class of protection against electric shock: I

Diode type: LED SMD

Luminous flux [lm]: 270

Colour temperature: white

Service life [h]: 30000

Number of on/off cycles: ≥ 25000

Ambient temperature range to which the product can be exposed: -15÷35

Enclosure material: aluminum alloy

Protective glass material: PC

Connection type: Terminal block

33752 DULI LED 6,5W-NW-L-GR

Surface-mounted light fitting



Range of sections of wires used [mm²]: 0,75-1,5

Lamp-heating time [s]: ≤1

Lamp-ignition time [s]: ≤0,5

IP class: 54

Additional information: The LED light source can only be replaced by qualified personnel (Kanlux service only)

Additional information: Any control panel or control equipment can only be replaced by qualified personnel (Kanlux service only)

PARAMETERS FOR LED AND OLED LIGHT SOURCES:

Energy efficiency class: D

Useful luminous flux of the light source Φ_{use} [lm]: 740

Useful luminous flux of the light source Φ_{use} [lm]: in sphere (360°)

Correlated colour temperature [K]: 4000

Colour consistency in McAdam ellipses: ≤6

Colour rendering index: 80

Survival factor: ≥0.9

The lumen maintenance factor: 0.96

LOGISTIC DATA:

Packaging method: 20

Number of units in the secondary packaging: 1

Number of units in the packaging: 20

Net unit weight [g]: 377

Grammage [g]: 458.5

Length of a unit pack [cm]: 17

Width of a unit pack [cm]: 4

Height of a unit pack [cm]: 17

Weight of a cardboard box [kg]: 9.17

Width of a cardboard box [cm]: 21.5

Height of a cardboard box [cm]: 36

Length of a cardboard box [cm]: 36

Volume of a cardboard box [m³]: 0.027864

33752 DULI LED 6,5W-NW-L-GR

Surface-mounted light fitting

