

## 36233 STRETON LED 200W NW

Parking lighting LED

5905339362339



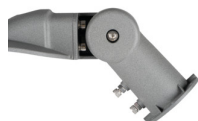
Kanlux STRETON LED are outdoor luminaires designed to illuminate parking lots or larger areas that must be well lit also after dark. Their durability (50,000 hours), tightness (IP65) and high power (up to 200W) make Kanlux STRETON LED a perfect complement to an investment in urban space, in parking lots, in sports facilities or squares.

### TYPE OF LIGHT SOURCE:

**Lighting technology used:** LED  
**Non-directional or directional light source:** NDLS  
**Mains or non-mains light source:** MLS  
**Connected light source (CLS):** no  
**Colour-tuneable light source:** no  
**High luminance light source:** no  
**Anti-glare shield:** no  
**Dimmable:** no

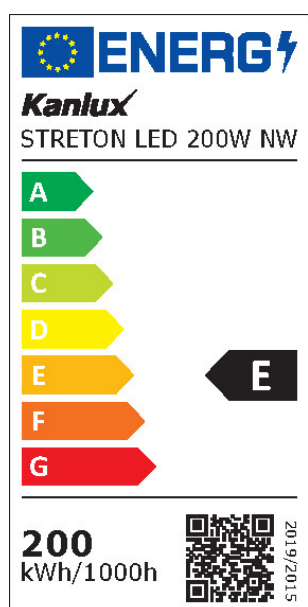
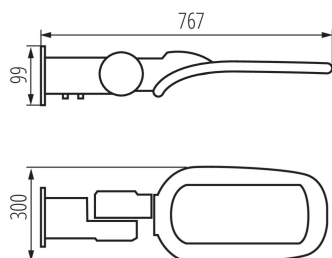
### PRODUCT PARAMETERS:

**Colour:** grey  
**Place of application:** outdoors  
**Minimum distance from the illuminated object:** 1m  
**Compatible with a dimmer:** no  
**Mercury content:** no  
**Rated voltage [V]:** 220-240 AC  
**Rated frequency [Hz]:** 50  
**Class of protection against electric shock:** I  
**Diode type:** LED SMD  
**Colour temperature:** white  
**Service life [h]:** 50000  
**Number of on/off cycles:** ≥20000  
**Lighting angle [°]:** X140/Y90  
**Ambient temperature range to which the product can be exposed:** -20÷45  
**Enclosure material:** aluminum alloy  
**Protective glass material:** PC  
**Connection type:** Free cable ends  
**Wire type:** H05RN-F  
**Wire length [m]:** 0.4  
**Wire diameter [mm²]:** 1  
**Lamp-heating time [s]:** ≤1  
**Lamp-ignition time [s]:** ≤0,5  
**IK class:** 08  
**IP class:** 65



## 36233 STRETON LED 200W NW

Parking lighting LED



### PARAMETERS FOR LED AND OLED LIGHT SOURCES:

**Energy consumption in on-mode of the light source (kWh/1000h):** 200  
**Energy efficiency class:** E  
**Useful luminous flux of the light source  $\Phi_{use}$  [lm]:** 26000  
**Useful luminous flux of the light source  $\Phi_{use}$  [lm]:** in sphere (360°)  
**Correlated colour temperature [K]:** 4000  
**Colour consistency in McAdam ellipses:**  $\leq 6$   
**On-mode power of the light source  $P_{on}$  [W]:** 200  
**Height of the light source [mm]:** 767  
**Width of the light source [mm]:** 99  
**Depth of the light source [mm]:** 300  
**Colour rendering index:** 70  
**Chromaticity coordinates (x):** 0,38  
**Chromaticity coordinates (y):** 0,38  
**Claim of equivalent power [W]:** 1327  
**R9 colour rendering index value:** -17  
**Survival factor:** 0,9  
**The lumen maintenance factor:** 0,96

### PARAMETERS FOR LED AND OLED MAINS LIGHT SOURCES:

**Displacement factor ( $\cos \phi_1$ ):** 0,99  
**LED light source replaces a fluorescent light source without integrated ballast of a particular wattage:** Not applicable  
**Flicker metric (Pst LM):** 1,0  
**Stroboscopic effect metric (SVM):** 0,4

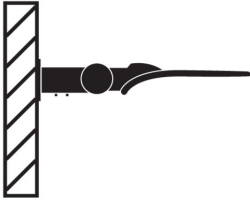
### LOGISTIC DATA:

**Packaging method:** 4  
**Number of units in the secondary packaging:** 1  
**Number of units in the packaging:** 4  
**Net unit weight [g]:** 3830  
**Grammage [g]:** 4647.5  
**Length of a unit pack [cm]:** 79  
**Width of a unit pack [cm]:** 12.5  
**Height of a unit pack [cm]:** 31  
**Weight of a cardboard box [kg]:** 18.59  
**Width of a cardboard box [cm]:** 51  
**Height of a cardboard box [cm]:** 33  
**Length of a cardboard box [cm]:** 82  
**Volume of a cardboard box [m<sup>3</sup>]:** 0.138006

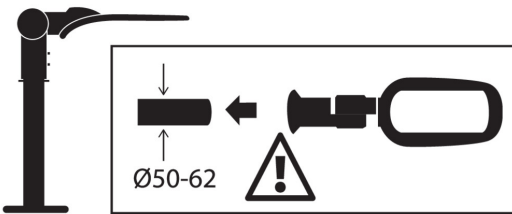
## 36233 STRETON LED 200W NW

Parking lighting LED

### OPTION 1



### OPTION 2



#### ADDITIONAL INFORMATION:

- 5 years Warranty under the terms of the warranty statement, available on our website

