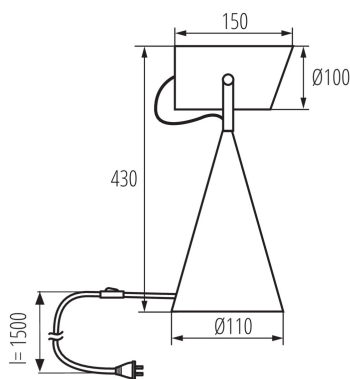


## 36260 LARATA E27 W

Table lamp

5905339362605



Kanlux LARATA E27 is a table lamp made of steel. The finish and the housing itself add elegance and a modern look to the lamp. The Kanlux LARATA table lamp is a unique product, made with attention to every detail. Due to its weight, the lamp remains stable on the surface and does not sway. The arm is adjusted with the help of two elegant screws, and the visible cable is placed in an aesthetic braid.

### PRODUCT PARAMETERS:

**Colour:** white

**Place of assembly:** On the floor

**Place of application:** Indoors

**Minimum distance from the illuminated object:** 0,1m

**On switch:** yes

**Light source included:** no

**Length [mm]:** 150

**Height MAX [mm]:** 430

**Width [mm]:** 110

**Rated voltage [V]:** 220-240 AC

**Rated frequency [Hz]:** 50

**Maximum power [W]:** max 5

**Class of protection against electric shock:** II

**Cap:** E27

**Ambient temperature range to which the product can be exposed:** 5÷25

**Enclosure material:** Metal

**Connection type:** Cable terminated with a plug

**Wire length [m]:** 1.5

**The fixture is movable vertically [°]:** 110

**IP class:** 20

### LOGISTIC DATA:

**Packaging method:** 6

**Number of units in the secondary packaging:** 1

**Number of units in the packaging:** 6

**Net unit weight [g]:** 1340

**Grammage [g]:** 1678.33

**Length of a unit pack [cm]:** 17.5

**Width of a unit pack [cm]:** 12.5

**Height of a unit pack [cm]:** 43

**Weight of a cardboard box [kg]:** 10.06998

**Width of a cardboard box [cm]:** 36

**Height of a cardboard box [cm]:** 46

**Length of a cardboard box [cm]:** 41.5

## 36260 LARATA E27 W

Table lamp



**Volume of a cardboard box [m³]:** 0.068724