

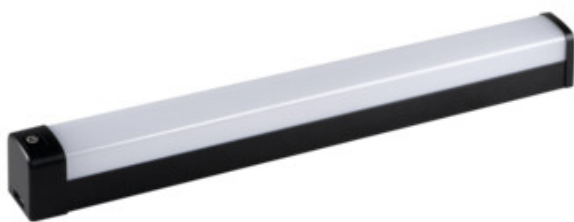
36657 AKVO IP44 23W-NW-B S

LED wall mounted fitting

5905339366573



IP
44



Kanlux AKVO IP44 S are wall and ceiling luminaires in three colors: white, chrome and black. The luminaire is available in 3 lengths and three powers: 60cm - 15W, 80cm - 20W and 100cm - 23W. Kanlux AKVO S lamps can be mounted vertically and horizontally, on the wall or on the ceiling, which creates virtually unlimited arrangement possibilities. In addition, these lamps have increased resistance to moisture IP44, which means that you can safely mount them in the bathroom or laundry room. Kanlux AKVO IP44 S lamps are perfect for lighting rooms such as a bathroom, laundry room, utility room, corridor or wardrobe. Kanlux AKVO IP 44 S are equipped with a discreet switch located in the housing of the luminaire. These lamps have a high luminous efficiency, over 100 lumens per Watt, thanks to which they help you save electricity.

TYPE OF LIGHT SOURCE:

Lighting technology used: LED

Non-directional or directional light source : NDLS

Mains or non-mains light source : MLS

Connected light source (CLS): no

Colour-tuneable light source: no

High luminance light source: no

Anti-glare shield : no

Dimmable: no

PRODUCT PARAMETERS:

Colour: black

Place of assembly: wall mounted

Minimum distance from the illuminated object : 0,1m

Compatible with a dimmer : no

On switch: yes

Integrated LED light source : yes

Rated voltage [V]: 220-240 AC

Rated frequency [Hz]: 50

Maximum power [W]: 23

Class of protection against electric shock : II

Lampshade material: plastic

Diode type: LED SMD

LED module: X01DZXL0189_B01PDPIR_24W

Luminous flux [lm]: 2750

Colour temperature: white

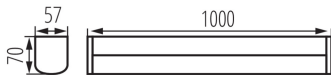
Cap: -

Service life [h]: 25000

Number of on/off cycles : 15000

36657 AKVO IP44 23W-NW-B S

LED wall mounted fitting



Ambient temperature range to which the product can be exposed: 5+30

Enclosure material: aluminum alloy

Connection type: Bolt terminal block

Range of sections of wires used [mm²]: 0,75-1,5

IP class: 44

Additional information: Possibility of replacing the LED light source only by qualified personnel (only by the manufacturer service)

Additional information: Containing product (CP)

Mercury content: no

PARAMETERS FOR LED AND OLED LIGHT SOURCES:

Energy consumption in on-mode of the light source

(kWh/1000h): 23

Energy efficiency class: D

Energy efficiency class of the light source in the contains product (CP): D

Useful luminous flux of the light source Φ_{use} [lm]: 3180

Useful luminous flux of the light source Φ_{use} [lm]: in sphere (360°)

Correlated colour temperature [K]: 4000

On-mode power of the light source P_{on} [W]: 23

Height of the light source [mm]: 46

Width of the light source [mm]: 957

Depth of the light source [mm]: 2

Colour rendering index: 80

Chromaticity coordinates (x): 0,38

Chromaticity coordinates (y): 0,38

Claim of equivalent power [W]: 186

R9 colour rendering index value: 6

Survival factor: 0,9

The lumen maintenance factor: 0,96

PARAMETERS FOR LED AND OLED MAINS LIGHT SOURCES:

Displacement factor (cos ϕ_1): 0,7

LED light source replaces a fluorescent light source without integrated ballast of a particular wattage: Not applicable

Flicker metric (Pst LM): 1,0

Stroboscopic effect metric (SVM): 0,4

LOGISTIC DATA:

Unit of measurement: unit

Packaging method: 10

36657 AKVO IP44 23W-NW-B S

LED wall mounted fitting

Number of units in the secondary packaging : 1

Number of units in the packaging : 10

Net unit weight [g] : 912

Grammage [g] : 1173

Length of a unit pack [cm] : 101

Width of a unit pack [cm] : 6.5

Height of a unit pack [cm] : 8.5

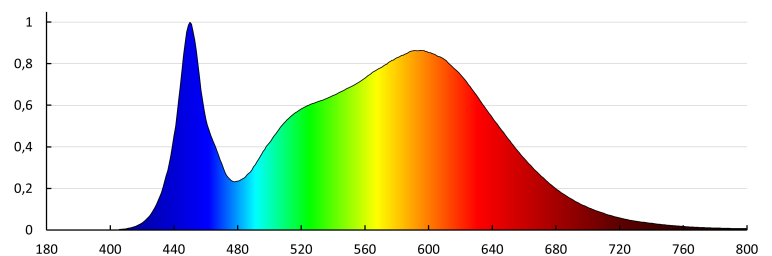
Weight of a cardboard box [kg] : 11.73

Width of a cardboard box [cm] : 34

Height of a cardboard box [cm] : 20

Length of a cardboard box [cm] : 103

Volume of a cardboard box [m³] : 0.07004



KANLUX S.A. (kat 36657) AKVO IP44 23W-NW-B S / Krzywa rozsyłu światła (biegunowo)

Oprawa: KANLUX S.A. (kat 36657) AKVO IP44 23W-NW-B S
Lampy: 1 x AKVO IP44 23W

