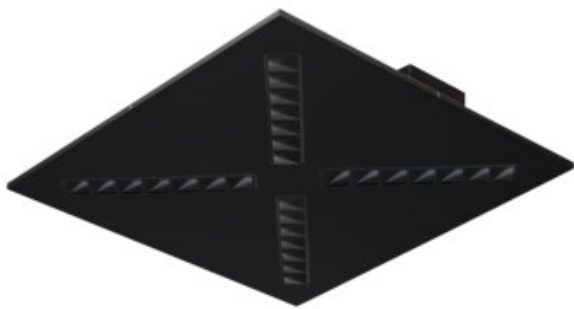


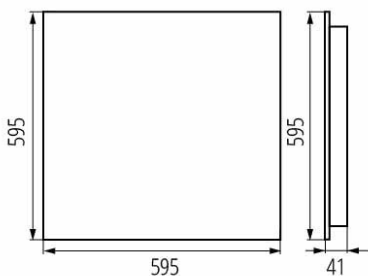
37195 OS-H8D-WW-RX-B-P1

Oprawa LED podtynkowa

5905339371959



OS RX B P1



PRODUCT PARAMETERS:

Colour: black

Place of assembly: Recessed mount in the ceiling

Place of application: Indoors

Minimum distance from the illuminated object: 0,5m

Compatible with a dimmer: no

The product is not suitable to be covered with a heat-insulating material: yes

Length [mm]: 595

Width [mm]: 595

Height [mm]: 41

Integrated LED light source: yes

Rated voltage [V]: 220-240 AC

Rated frequency [Hz]: 50

Maximum power [W]: 47

Class of protection against electric shock: I

Lampshade material: plastic

Diode type: LED SMD

Luminous flux of the light fitting [lm]: 5300

Colour temperature: Warm white

Service life [h]: 50000

Luminous-flux-retention factor at the end of rated service life: L90B10

Number of on/off cycles: ≥ 30000

Lighting angle [°]: 80

Ambient temperature range to which the product can be exposed: 5÷25

Shade type: louvre / black

Enclosure material: Metal

Connection type: Self-clamping block

Range of sections of wires used [mm²]: 1,5÷2,5

Lamp-heating time [s]: ≤ 1

Lamp-ignition time [s]: $\leq 0,5$

IP class: 20

Additional information: Containing product (CP)

PARAMETERS FOR LED AND OLED LIGHT SOURCES:

Correlated colour temperature [K]: 3000

Colour consistency in McAdam ellipses: ≤ 3

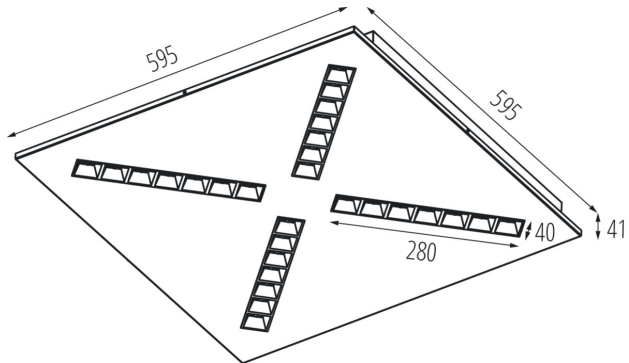
Colour rendering index: 80

LOGISTIC DATA:

Unit of measurement: unit

37195 OS-H8D-WW-RX-B-P1

Oprawa LED podtynkowa



Packaging method: 1

Number of units in the secondary packaging: 1

Number of units in the packaging: 1

KANLUX S.A. (kat 37195) OS-H8D-WW-RX-B-P1 / Krzywa rozsyłu światła (biegunowo)

Oprawa: KANLUX S.A. (kat 37195) OS-H8D-WW-RX-B-P1
Lampy: 4 x OS-H8D-WW

