

## 38425 FL AGOR/A PRO 200W NW

LED floodlight

5905339384256



Kanlux AGOR PRO floodlights are a modern and durable lighting solution, ideal for areas such as sports facilities, production halls or facades of industrial or warehouse buildings. They are available in three power ratings: 100W, 150W and 200W and in symmetrical (140 lm/W) and asymmetrical (135 lm/W) versions. Thanks to the IP65 tightness class and IK08 durability, they effectively resist external factors. Solid construction made of cast aluminum, reinforced radiator and angle adjustment up to 270° ensure long life and versatility. They operate in 4000K color and are covered by a 5-year warranty. Accessories in the form of a protective grid are available.

### TYPE OF LIGHT SOURCE:

**Lighting technology used:** LED

**Non-directional or directional light source :** DLS

**Mains or non-mains light source :** MLS

**Connected light source (CLS):** no

**Colour-tuneable light source:** no

**High luminance light source:** no

**Anti-glare shield:** no

**Dimmable:** no

### PRODUCT PARAMETERS:

**Colour:** black

**Place of assembly:** ceiling mounted, wall mounted

**Place of application:** for industrial applications

**Minimum distance from the illuminated object :** 1m

**Compatible with a dimmer :** no

**Wykrywanie ruchu:** no

**Width [mm]:** 346

**Height [mm]:** 387

**Depth [mm]:** 98

**Integrated LED light source :** yes

**Rated voltage [V]:** 220-240 AC

**Rated frequency [Hz]:** 50

**Maximum power [W]:** 200

**Class of protection against electric shock :** I

**Lampshade material:** Tempered glass

**Diode type:** LED SMD

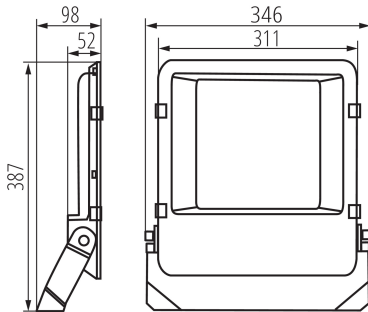
**Luminous flux [lm]:** 27000

**Colour temperature:** white

**Service life [h]:** 50000

## 38425 FL AGOR/A PRO 200W NW

### LED floodlight



**Number of on/off cycles:**  $\geq 25000$

**Lighting angle [°]:** X125/Y65

**Ambient temperature range to which the product can be exposed:**  $-30 \div 45$

**Enclosure material:** Metal

**Connection type:** Free cable ends

**Wire type:** H05RN-F

**Wire length [m]:** 1

**Wire diameter [mm²]:** 1

**The fixture is movable vertically [°]:** 180

**IK class:** 08

**IP class:** 65

**Additional information:** It is not possible to replace the LED light source

**Additional information:** It is not possible to replace the control panel or control equipment

**Additional information:** Containing product (CP)

**Mercury content:** no

**Mercury content in the lamp [mg]:** 0

**Luminous efficiency of the lamp [lm/W]:** 135

#### PARAMETERS FOR LED AND OLED LIGHT SOURCES:

**Energy efficiency class of the light source in the contains product (CP):** D

**Useful luminous flux of the light source  $\Phi_{use}$  [lm]:** 32610

**Useful luminous flux of the light source  $\Phi_{use}$  [lm]:** w szerokim stożku (120°)

**Correlated colour temperature [K]:** 4000

**Colour consistency in McAdam ellipses:** 6

**Height of the light source [mm]:** 346

**Width of the light source [mm]:** 387

**Depth of the light source [mm]:** 98

**Colour rendering index:**  $\geq 80$

**Chromaticity coordinates (x):** 0,38

**Chromaticity coordinates (y):** 0,38

**Survival factor:** 0,9

**The lumen maintenance factor:** 0.96

#### PARAMETERS FOR LED AND OLED MAINS LIGHT SOURCES:

**Displacement factor ( $\cos \phi_1$ ):** 0.98

**LED light source replaces a fluorescent light source without integrated ballast of a particular wattage:** Not applicable

**Flicker metric ( $P_{st} LM$ ):** 1,0

**Stroboscopic effect metric (SVM):** 0,4

## 38425 FL AGOR/A PRO 200W NW

LED floodlight

### LOGISTIC DATA:

Unit of measurement: unit

Packaging method: 3

Number of units in the secondary packaging: 1

Number of units in the packaging: 3

Net unit weight [g]: 4100

Grammage [g]: 4660

Gross unit weight [g]: 4482

Length of a unit pack [cm]: 36

Width of a unit pack [cm]: 6.5

Height of a unit pack [cm]: 41.5

Weight of a cardboard box [kg]: 13.98

Width of a cardboard box [cm]: 21.5

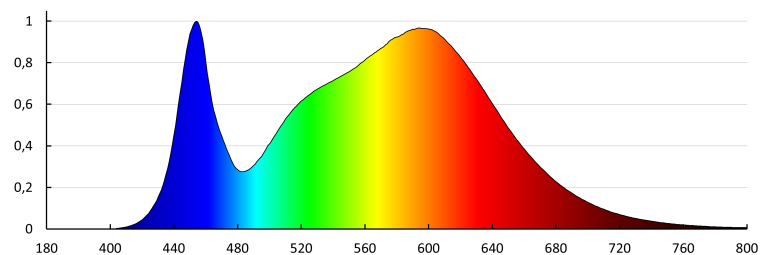
Height of a cardboard box [cm]: 44

Length of a cardboard box [cm]: 37

Volume of a cardboard box [m<sup>3</sup>]: 0.035002

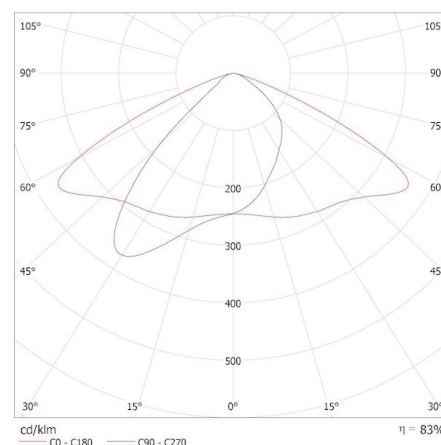
### ADDITIONAL INFORMATION:

- 5 years Warranty under the terms of the warranty statement, available on our website



KANLUX S.A. (kat 38425) FL AGORIA PRO 200W NW / Krzywa rozsyłu światła (biegunowo)

Oprawa: KANLUX S.A. (kat 38425) FL AGORIA PRO 200W NW  
Lampy: 1 x FL AGORIA PRO 200W



Date of issue: 29.11.2024, 09:31

We reserve the right to make technical changes. The data contained in this material are not legally binding.

Photometry: the results obtained from testing were from a specific sample. ul. Objazdowa 1-3, 41-922 Radzionków, Poland

## 38425 FL AGOR/A PRO 200W NW

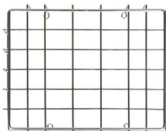
LED floodlight

### ACCESSORIES

**38426**

FL AGOR PRO GRID 100W

Protective grid for floodlight FL AGOR PRO 100W, FL AGOR PRO GRID 100W, black (38426)



**38427**

FL AGOR PRO GRID 150W

Protective grid for floodlight FL AGOR PRO 150W, FL AGOR PRO GRID 150W, black (38427)



**38428**

FL AGOR PRO GRID 200W

Protective grid for floodlight FL AGOR PRO 200W, FL AGOR PRO GRID 200W, black (38428)

