

# Kanlux

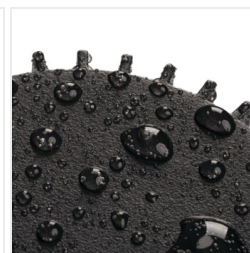


EAN: 5905339902719

Garden light fitting with replaceable light source  
Kanlux 46201 RADILO EL 2X B



IP  
44



Date of issue: 14.04.2026, 08:53

We reserve the right to make technical changes. The data contained in this material are not legally binding.

Photometry: the results obtained from testing were from a specific sample.

Kanlux S.A. ul. Objazdowa 1-3, 41-922 Radzionków, Poland [kanlux@kanlux.com](mailto:kanlux@kanlux.com)

EN

## PRODUCT PARAMETERS

|                            |                      |
|----------------------------|----------------------|
| Rated voltage [V]          | 220-240 AC           |
| Rated frequency [Hz]       | 50                   |
| Maximum power [W]          | 2 x max 11           |
| Cap (Light source)         | GU10                 |
| Light source               | PARI6 LED            |
| Light source included      | no                   |
| Place of application       | Indoors and outdoors |
| IP class                   | 44                   |
| Fixture lighting direction | up and down          |

## DIMENSIONS AND MOUNTING

|  |                     |
|--|---------------------|
| Height [mm]  | 192                 |
| Width [mm]   | 86                  |
| Length [mm]  | 100                 |
| Connection type                                    | Bolt terminal block |
| Range of sections of wires used [mm <sup>2</sup> ] | 1÷1,5               |

## MATERIAL AND CONSTRUCTION

|   |                    |
|---|--------------------|
| Colour  | black              |
| Material  | aluminum alloy, PC |
| Enclosure material  | aluminum alloy     |
| Lampshade material  | PC                 |
| Class of protection against electric shock                    | I                  |
| Minimum distance from the illuminated object                  | 0,2m               |
| Ambient temperature range to which the product can be exposed | -20÷35             |

## LOGISTICS

|   |         |
|---|---------|
| Unit of measurement                         | unit    |
| Packaging method                            | 12      |
| Number of units in the secondary packaging  | 1       |
| Number of units in the packaging            | 12      |
| Net unit weight [g]                         | 406     |
| Grammage [g]                                | 504.17  |
| Gross unit weight [g]                       | 472     |
| Length of a unit pack [cm]                  | 11      |
| Width of a unit pack [cm]                   | 9.5     |
| Height of a unit pack [cm]                  | 20.5    |
| Weight of a cardboard box [kg]              | 6.05004 |
| Width of a cardboard box [cm]               | 35      |
| Height of a cardboard box [cm]              | 23.5    |
| Length of a cardboard box [cm]              | 40      |
| Volume of a cardboard box [m <sup>3</sup> ] | 0.0329  |

Date of issue: 14.04.2026, 08:53

We reserve the right to make technical changes. The data contained in this material are not legally binding.

Photometry: the results obtained from testing were from a specific sample.

Kanlux S.A. ul. Objazdowa 1-3, 41-922 Radzionków, Poland kanlux@kanlux.com