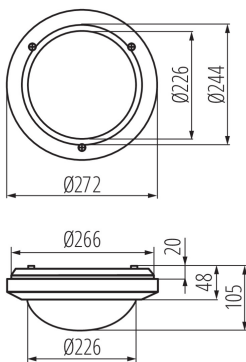


07015 MARC DL-60

Ceiling-mounted light fitting with replaceable light source

5905339070159



Kanlux MARC DL ceiling light fixture combines high resistance to dust, moisture (IP54) and UV radiation are other assets of the luminaire.

PRODUCT PARAMETERS:

Colour: white

Place of assembly: wall mounted, ceiling mounted

Place of application: Indoors and outdoors

Minimum distance from the illuminated object: 0,5m

Height [mm]: 105

Diameter [mm]: 244

Rated voltage [V]: 220-240 AC

Rated frequency [Hz]: 50

Maximum power [W]: max 60

Class of protection against electric shock: II

Lampshade material: PC

Light source: GLS/CFL/LED

Cap: E27

Ambient temperature range to which the product can be exposed: -10÷35

Enclosure material: PC

Connection type: Terminal block

Range of sections of wires used [mm²]: 1-1,5

IP class: 54

LOGISTIC DATA:

Packaging method: 12

Number of units in the packaging: 12

Net unit weight [g]: 530

Grammage [g]: 783.33

Length of a unit pack [cm]: 28

Width of a unit pack [cm]: 11

Height of a unit pack [cm]: 28

Weight of a cardboard box [kg]: 9.39996

Width of a cardboard box [cm]: 57.5

Height of a cardboard box [cm]: 36

Length of a cardboard box [cm]: 59.5

Volume of a cardboard box [m³]: 0.123165

ADDITIONAL INFORMATION:

- high UV resistance (PCTO)

07015 MARC DL-60

Ceiling-mounted light fitting with replaceable light source

KANLUX S.A. (kat 7015) MARC DL-60 / Krzywa rozsyłu światła (biegunowo)

Oprawa: KANLUX S.A. (kat 7015) MARC DL-60
Lampy: 1 x A60 60W/IC

