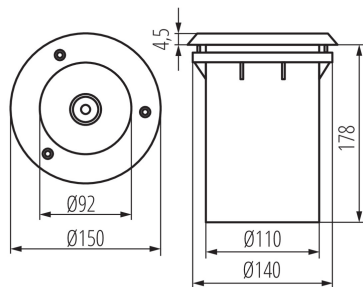


07195 XARD DL-40

In-ground lighting fitting

5905339071958



Kanlux XARD ground recessed luminaire is characterised by the highest level of resistance to mechanical damage - the so-called "vandal-resistance" - IK10. Add to this a high rating of tightness (IP67) and we get a luminaire which is a great solution for lighting facades of buildings, squares, terraces, parks, paths, passages, driveways, stairs, etc.

PRODUCT PARAMETERS:**Colour:** stainless steel**Place of assembly:** In the ground**Place of application:** Indoors and outdoors**Minimum distance from the illuminated object:** 0,5m**Light source included:** no**Fixture lighting direction:** Top**Height [mm]:** 183**Diameter [mm]:** 150**Number of chokes:** 1**Rated voltage [V]:** 220-240 AC**Rated frequency [Hz]:** 50**Maximum power [W]:** max 40**Class of protection against electric shock:** I**Light source:** A60**Cap:** E27**Ambient temperature range to which the product can be exposed:** -20÷35**Enclosure material:** aluminum alloy**Panel/frame material:** stainless steel**Protective glass material:** Tempered glass**Connection type:** Free cable ends**Wire length [m]:** 0.22**Wire diameter [mm²]:** 1**Permissible static pressure [kN]:** 20**IK class:** 10**IP class:** 67**LOGISTIC DATA:****Packaging method:** 6**Number of units in the packaging:** 6**Net unit weight [g]:** 1120**Grammage [g]:** 1366.67**Length of a unit pack [cm]:** 15.5**Width of a unit pack [cm]:** 15.5**Height of a unit pack [cm]:** 20**Weight of a cardboard box [kg]:** 8.20002**Width of a cardboard box [cm]:** 16.5

07195 XARD DL-40

In-ground lighting fitting

Height of a cardboard box [cm]: 42.5
Length of a cardboard box [cm] : 47
Volume of a cardboard box [m³]: 0.032959

ADDITIONAL INFORMATION:

- Junction box included
- total light source length max 110 mm

KANLUX S.A. (kat 7195) XARD DL-40 / Krzywa rozsyłu światła (biegunowo)

Oprawa: KANLUX S.A. (kat 7195) XARD DL-40
Lampy: 1 x TC-QSE 18W/827

