

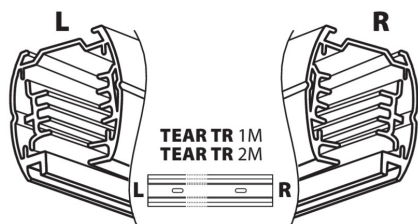
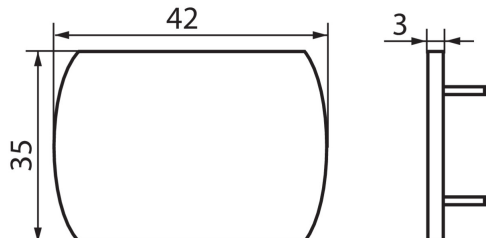
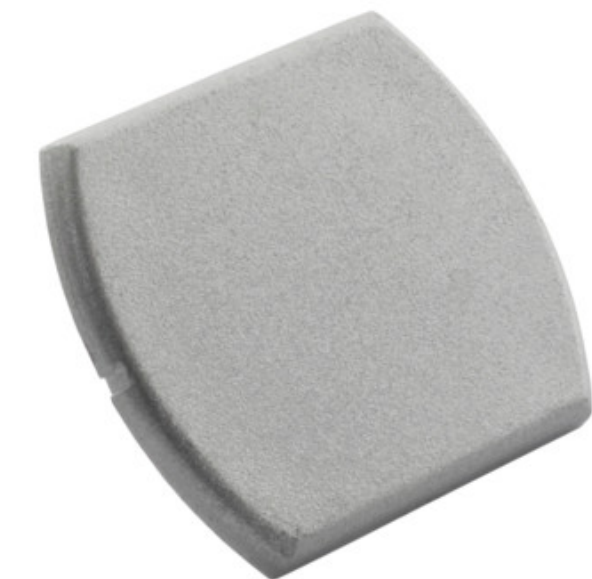
08168 TEAR PR-PLUG

Accessory for electrical supply track systems

5905339081681

**PRODUCT PARAMETERS:****Colour:** grey**Place of assembly:** rail TEAR**Place of application:** Indoors**Class of protection against electric shock:** I**Ambient temperature range to which the product can be exposed:** 5÷25**Enclosure material:** plastic**IP class:** 20**LOGISTIC DATA:****Packaging method:** 50**Number of units in the secondary packaging:** 50**Number of units in the packaging:** 500**Net unit weight [g]:** 5**Grammage [g]:** 6.52**Length of a unit pack [cm]:** 4.5**Width of a unit pack [cm]:** 3.5**Height of a unit pack [cm]:** 1**Weight of a cardboard box [kg]:** 3.26**Width of a cardboard box [cm]:** 20**Height of a cardboard box [cm]:** 16**Length of a cardboard box [cm]:** 33**Volume of a cardboard box [m³]:** 0.01056**ADDITIONAL INFORMATION:**

- TEAR PR-PLUG: designed for closing free ends of the TEAR TR busbar



08168 TEAR PR-PLUG

Accessory for electrical supply track systems

